

TURCK

Your Global Automation Partner

IP67 Power Supplies Overview



IP67 Power Supplies

Power Up Your Applications

Industrial power supplies from Turck are rugged and reliable solutions to power up all your applications. From compact, standard variants to more powerful versions with an IO-Link communication interface, you'll find a tough IP67-rated device that's ready to go to work in harsh environments. These devices are ideal for customers who need 24-28 V field power but want to avoid costly cable routing. Choose from standard power supplies and versions with IO-Link.

The PSU67 family can be mounted directly on a machine or wall for application flexibility. No need to place in a control cabinet - protective measures are not required as compared to IP20 rated devices. These low voltage solutions achieve high efficiency rates of up to 95%, depending on the model chosen. Failsafe operation is enhanced through no-load and short-circuit protection as well as passive air cooling. The availability of versions with IO-Link gives users options for easier parameter setting, remote monitoring of load currents and resetting the device when necessary.

Benefits

- AC/DC wide-range of inputs, worldwide use
- Variants with IO-Link
- High operational availability through mains buffering, open and short circuit-protection and passive air cooling
- High level of efficiency
- Status LEDs for easy monitoring
- Broad temperature range
- SELV acc. to DIN EN 60950-1



Part Number Key

Standard Power Supplies

PSU - 67 - 11 - 2420 / M

PSU Product Type **67** Protection Class **11** Input/Output

Product Type
PSU = Power Supply

Protection Class
67 = IP67

Input/Output
11 = 1 Input, 1 Output
12 = 1 Input, 2 Output

2420 Output Power **M** Output Connector

Output Power
2420 = 24 VDC Output, 2A
2440 = 24 VDC Output, 3.8A
2480 = 24 VDC Output, 8A

Output Connector
/M = 4-Pin 7/8"
/P = 4-Pin M8 Picofast
/M/G = 4-Pin 7/8" Shared Ground

Smart Switching Power Supplies

PSU - 67 - 1P - 1M - 2M4 - 24150 - IOL

PSU Product Type **67** Protection Class **1P** Input Voltage

Product Type
PSU = Power Supply

Protection Class
67 = IP67

Input Voltage
1P = Single-phase
3P = Three-phase

1M Input Connector **2M4** Output Connector **24150** Output Power

Input Connector
1S = M12 S-Coded
1M = 1 7/8" Minifast
1MP = 1 7/8" Minifast Power
Multi-Coded
1H2 = Han Q4/2

Output Connector
2L = M12 L-Coded
2M4 = 2 7/8" Minifast 4-Pins
2M5 = 2 7/8" Minifast 5-Pins
1H0 = 1 Han Q4/0

Output Power
24150 = 24 VDC 15A
24200 = 24 VDC 2 x 10A
24250 = 24 VDC 25A

IOL Features

Features
IOL = IO-Link
F = Electronic Fuse

Rugged Solutions for Power Transmission

Standard Power Supplies



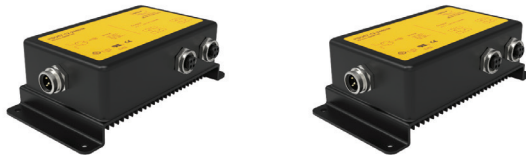
Part Number	PSU67-11-2440/P	PSU67-11-2420/M	PSU67-11-2440/M
Material Number	6884257	6884140	6884141
Input Voltage	100... 240 VAC	100... 240 VAC	100... 240 VAC
Output Current	3.8 A	2 A	3.8 A
Output Voltage	24 VDC	24 VDC	24 VDC
Input Connector	3-pin, 7/8"	3-pin, 7/8"	3-pin, 7/8"
Output Connector	4-pin, M8 picofast	4-pin, 7/8"	4-pin, 7/8"
Dimensions	85 x 172 x 35 mm	85 x 172 x 35 mm	85 x 172 x 35 mm
Weight	808 g	833 g	812 g
Protection Class	IP67	IP67	IP67



Part Number	PSU67-11-2440/M/G	PSU67-11-2480/M	PSU67-11-2480/M/G
Material Number	100000556	6884147	6884250
Input Voltage	100... 240 VAC	100... 240 VAC	100... 240 VAC
Output Current	3.8 A	8 A	8 A
Output Voltage	24 VDC	24 VDC	24 VDC
Input Connector	3-pin, 7/8"	3-pin, 7/8"	3-pin, 7/8"
Output Connector	4-pin, 7/8"	4-pin, 7/8"	4-pin, 7/8"
Dimensions	85 x 172 x 35 mm	122 x 245 x 70 mm	122 x 245 x 70 mm
Weight	833 g	3250 g	3200 g
Protection Class	IP67	IP67	IP67

Rugged Solutions for Power Transmission

Standard Power Supplies

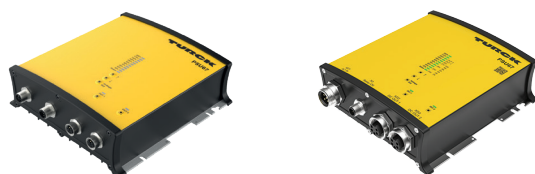


Part Number	PSU67-12-2480/M	PSU67-12-2480/M/G
Material Number	6884148	10000557
Input Voltage	100... 240 VAC	100... 240 VAC
Output Current	2 x 3.8 A	2 x 3.8 A
Output Voltage	24 VDC	24 VDC
Input Connector	3-pin, 7/8"	3-pin, 7/8"
Output Connector	2 x 4-pin, 7/8"	2 x 4-pin, 7/8"
Dimensions	122 x 245 x 70 mm	122 x 245 x 70 mm
Weight	3268 g	3217 g
Protection Class	IP67	IP67



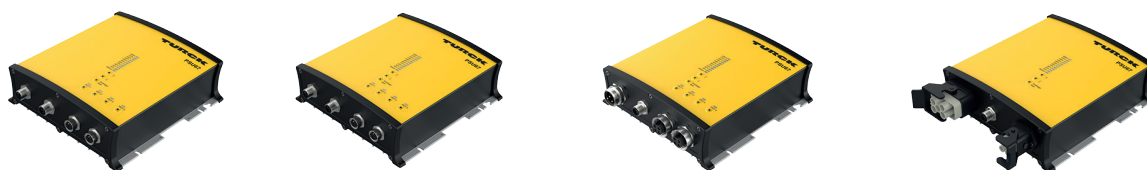
Rugged Solutions for Power Transmission

Smart Switching Power Supplies



Part Number	PSU67-3P-1S-2L-24250-F	PSU67-3P-1MP-2M5-24200-F
Material Number	100028238	100025679
Input Voltage	320... 550 VAC	320... 550 VAC
Output Current	25 A	2 x 10 A
Output Voltage	24 VDC	24 VDC
Input Connector	M12 S-Coded	4-pin, 7/8"
Output Connector	M12 L-Coded	5-pin, 7/8"
Dimensions	183 x 180.6 x 58.7 mm	183 x 180.6 x 58.7 mm
Weight	1539 g	1677 g
Protection Class	IP67	IP67

Smart Switching Power Supplies with IO-Link



Part Number	PSU67-3P-1S-2L-24250-IOL-F	PSU67-1P-1S-2L-24150-IOL-F	PSU67-1P-1M-2M4-24150-IOL-F	PSU67-3P-1H2-1H0-24250-IOL
Material Number	100025929	100028305	100025928	100028240
Input Voltage	320... 550 VAC	100... 240 VAC	100... 240 VAC	320... 550 VAC
Output Current	25 A	15 A	15A	25 A
Output Voltage	24 VDC	24 VDC	24 VDC	24 VDC
Input Connector	M12 S-Coded	M12 S-Coded	3-pin, 7/8"	Han Q4/2
Output Connector	M12 L-Coded	M12 L-Coded	4-pin, 7/8"	Han Q4/0
Dimensions	183 x 180.6 x 58.7 mm	183 x 180.6 x 58.7 mm	183 x 180.6 x 58.7 mm	183 x 180.6 x 58.7 mm
Weight	1605 g	1542 g	1539 g	1539 g
Protection Class	IP67	IP67	IP67	IP67

TURCK



30 subsidiaries and over
60 representations worldwide!

Printed in USA

©2024 by Turck Inc. All rights reserved. No part of the
publication may be reproduced without written permission.

100031 A 09/24

www.turck.us