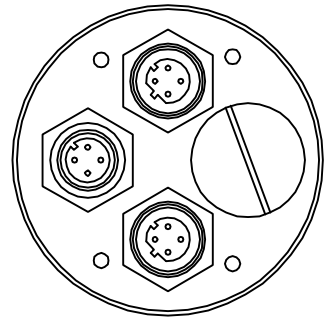
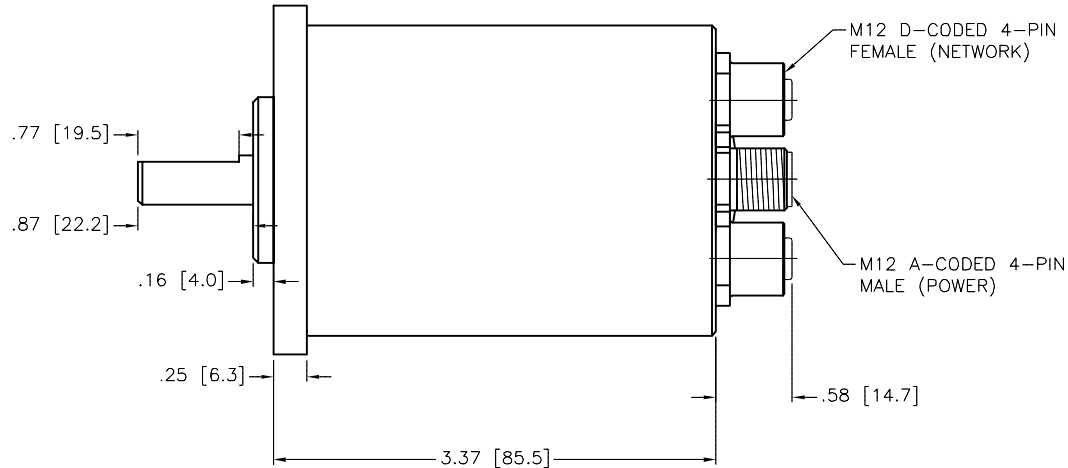
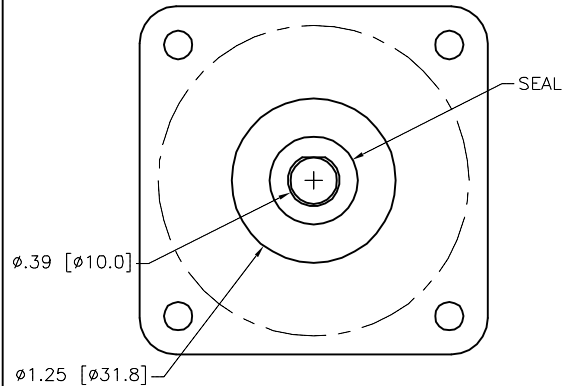



SPECIFICATIONS	
INTERFACE	ETHERNET IP, 10/100 Mbit AUTONSENSE w/ AUTO-SWITCH CAPABILITY, 2 PORT DLR FUNCTIONALITY
DEFAULT IP ADDRESS	192.168.0.50
RESPONSE TIME	1 ms
RESOLUTION	65,536 COUNTS/TURN (16 BIT ST) 4,096 TURNS (12 BIT MT) ±10 ARC-MINUTES
POWER SUPPLY	12-54 VDC
POWER CONSUMPTION	2.5W (MAX.); 100mA @ 24VDC (TYP.)
POWER OVER ETHERNET	YES
LED-NETWORK STATUS	GREEN/RED
LED-MODULE STATUS	GREEN/RED
LED-LINK/ACTIVITY LED	ORANGE
PROTECTION	IP67
SHOCK	50g, 11ms DURATION
VIBRATION	20g, 5-2,000 Hz
OPERATING TEMPERATURE	-40°C to +85°C (-40°F to +185°F)
HOUSING MATERIAL	POWDER COATED ALUMINUM
SHAFT SEAL MATERIAL	NITRILE
SPEED	6000 RPM
STARTING TORQUE	1.2 OZ-IN [.85 N-cm] @25°C (77°F)
MOMENT OF INERTIA (OZ-IN-SEC ²)	6.00x10 ⁻⁴ @25°C (77°F)



SOURCE DRAWING - FOR REFERENCE ONLY

<div>NOTE:</div> <div>1. ALL DIMENSIONS ARE REFERENCE.</div>					RELATED DOCUMENTS		3RD ANGLE PROJECTION		THIS DRAWING IS CONFIDENTIAL AND THE PROPERTY OF TURCK INC. USE OF THIS DOCUMENT WITHOUT WRITTEN PERMISSION IS PROHIBITED.		3000 CAMPUS DRIVE MINNEAPOLIS, MN 55441 1-800-544-7769 (763) 553-7300 (763) 553-0708 fax turck.com	
					1.				TURCK INC <i>High Technology Sensors and Automation Controls</i>			
					2.							
					3.							
4.		MATERIAL		ALL DIMENSIONS DISPLAYED ON THIS DRAWING ARE FOR REFERENCE ONLY		DRFT NF		DATE 06/03/15		DESCRIPTION RM-94SA1R-9J28B-B3M12		
SEE SPECIFICATIONS		APVD K.H.				SCALE 1=1.5						
FINISH		SEE SPECIFICATIONS		CONTACT TURCK FOR MORE INFORMATION		UNIT OF MEASUREMENT INCH [MILLIMETER]		IDENTIFICATION NO.		REV		
								1562120 (SOURCE)		A		
A	DRAWING RELEASE	NF	06/03/15				DO NOT SCALE THIS DRAWING		FILE: 1562120		SHEET 1 OF 1	
REV	DESCRIPTION	BY	DATE	ECO NO.								