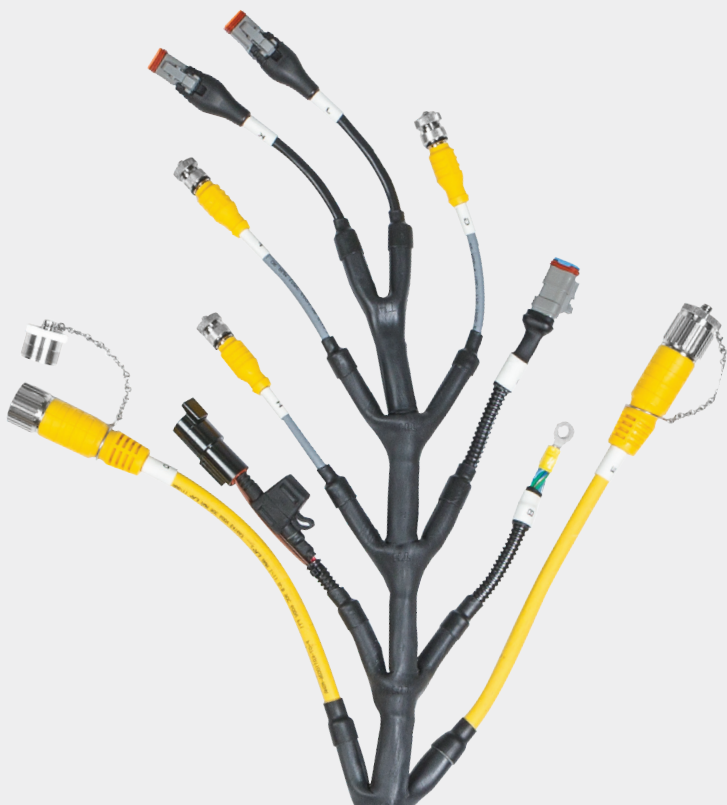


# TURCK

Connectivity  
Capabilities



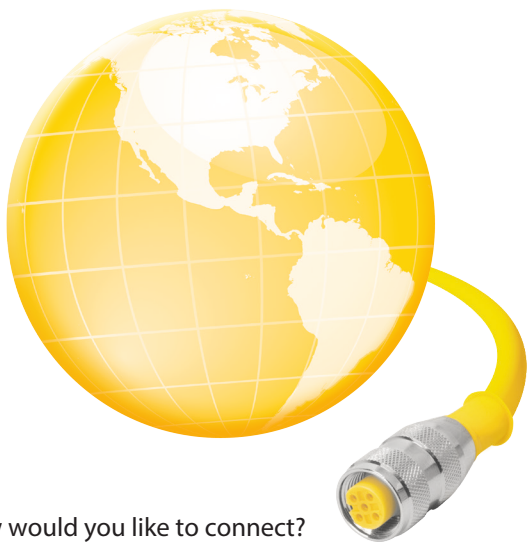
# TURCK

YOUR CONNECTIVITY SOLUTIONS PROVIDER

Welcome to the Turck connectivity capabilities brochure. With over 1,000 OEM connectors and terminals, and more than 2,000 cable and wire types, the solution to your specification is only a phone call away.











Turck leads the industry in customized solutions, connector styles, design speed and delivery. Our proven capabilities are reflected in over 20,000 unique connectivity products that are built to last. When you team up with Turck, you gain a long term partner with your best interests in mind.

**Turck offers everything you need to get connected.  
Contact us today to partner on a custom solution.**



How would you like to connect?

**ENDLESS POSSIBILITIES,  
ONE MANUFACTURER.**

M8 - Picofast®	
M12 - Eurofast®	
1/2" - Microfast®	
M16 - Versafast®	
7/8", 1", 1-1/8" - Minifast®	
M23, M27 - Multifast®	
M16, M23, A-Size, D-Size - Powerfast®	
Network Media	
Custom Solutions	
Process Automation	

See what we've done...

**...challenge us to  
something new.**

- 1,000 OEM off the shelf connectors
- 5.5 million meters of wire and cable in stock
- Custom solution engineering team
- North American manufacturing
- Harness capabilities
- Custom molding

1

### M8 Thread

- 3, 4 and 6-pin
- 125 V, 2 A to 125 V, 4 A



2

### TPU Continuous Flex

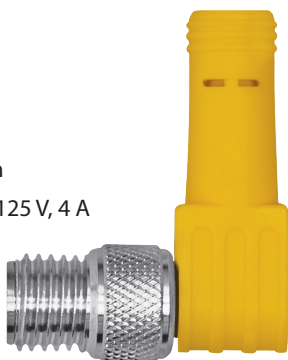
- Over 20 million flex cycles
- Excellent oil, UV and weather resistance



3

### M8 Thread

- 3, 4 and 6-pin
- 125 V, 2 A to 125 V, 4 A



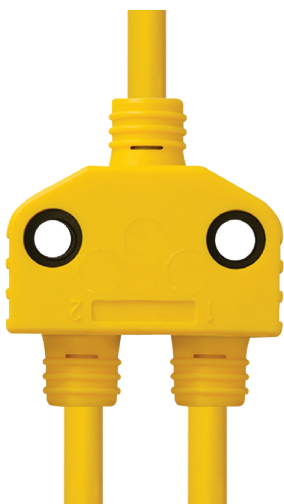
### M8 Connector to Splitter

- 125 V, 4 A



### Compact M8 Splitter with Mounting Holes

- Simple connector, or connector with extension cable



### M8 Connector Branches from Splitter

- 125 V, 4 A



7

### M8 Snap Lock (Locking Sleeve)

- 3, 4 and 6-pin
- 125 V, 2 A to 125 V, 4 A



8

### TPU General Purpose

- Cut/abrasion immune
- Excellent oil, UV and weather resistance



9

### M8 Snap Lock with LEDs

- 10 VAC/20 VDC, 2 and 4 A
- PNP and NPN Signals





### M12 Thread

- Accepts 20, 22 and 24 AWG conductors
- 2-6, 10 and 12-pin
- 60 VAC/75 VDC, 2 A to 250 V, 4 A



### PVC General Purpose

- Flexible
- UV, sunlight, oil, water and grease resistant



### M12 Thread

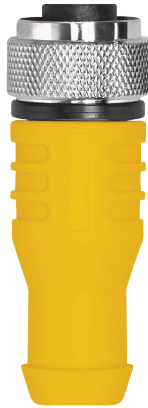
- Accepts 22 AWG conductors
- 3 and 4-pin
- 250 V, 4 A



13

### M12 Thread

- Accepts 18, 20, 22 and 24 AWG conductors
- 2, 6, 8, 10 and 12-pin
- 60 VAC/75 VDC, 2 A to 250 V, 4 A
- Shield to coupling nut



14

### TPU-Shield and Double Jacket

- Braided shield
- Cut/abrasion resistant



15

### M12 Thread

- Accepts 18, 20, 22 and 24 AWG conductors
- 3-6, 8, 10 and 12-pin
- 60 VAC/75 VAC, 2 A to 250 V, 4 A





16

### M12 Armored

- Shield tied to coupling nut
- 3, 4 and 5-pin
- 250 V, 4 A



17

### PVC Armored Instrumentation Cable

- UL ITC/PLTC or MC listings
- CSA ACIC
- Excellent UV and sunlight resistance
- Crush and impact resistant
- Physical protection against rodents



18

### M12 Armored

- Shield tied to coupling nut
- 3, 4 and 5-pin
- 250 V, 4 A

19

### M12 with LEDs

- 3, 4 and 5-pin
- 10-30 V, 4 A
- PNP and NPN signals



20

### Instrumentation Tray Cable

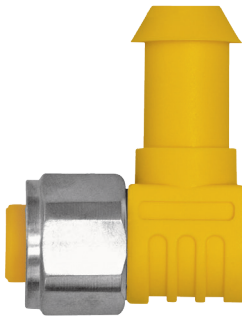
- PVC or TPE
- UL 13 PLTC, UL 2250 ITC and CSA CMX-outdoor-GMG listed
- Suitable for indoor and outdoor circuits
- FT4 flame retardant, UV and oil resistant



21

### M12 316 Stainless Steel

- Hex coupling nut 2-6, 10 and 12-pin
- 60 VAC/75 VAC, 2 A to 250 VDC, 4 A





### M12 Incremental Encoder Connector

- 3 indicator LEDs
- 8-pin
- 5-30 VDC



### PVC Shielded

- RFI/EMI protection
- Differential and single ended mode applications



### M12 Incremental Encoder Connector

- Shield tied to coupling nut
- RFI/EMI protection
- 8-pin
- 60 VAC/75 VDC, 2 A

25

### M12 Reverse Key (B-Code)

- 3 and 5-pin
- 250 V, 4 A



26

### Welding Cable TPE

- Weld slag/spatter resistant
- Oil and grease resistant
- -40 to +105 °C



27

### M12 Reverse Key (B-Code)

- 3 and 5-pin
- 250 V, 4 A





### 1/2" Thread

- Accepts 20 and 22 AWG conductors
- 3, 4, 5 and 6-pin
- 250 V, 4 A



### TPU Coil Cord

- For repetitive motion
- Customize to any length
- UV, weather and oil resistant



### 1/2" Thread

- Accepts 18 AWG conductors
- 2, 3 and 5-pin
- 250 V, 4 A

31

### M16 Thread

- Accepts 18, 22, 24 and 26 AWG conductors
- 5-8, 12, 14 and 19-pin
- 30 V, 3 A to 125 V, 8 A



32

### Instrumentation Tray Cable

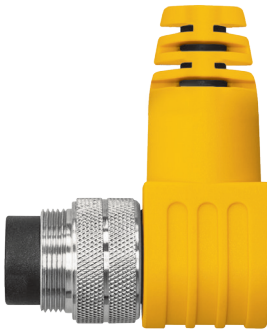
- PVC or TPE
- UL13 PLTC, UL 2250 ITC and CSA CMX-outdoor-GMG listed
- Suitable for indoor and outdoor circuits
- FT4 flame retardant, UV and oil resistant



33

### M16 Thread

- Accepts 18, 22, 24 and 26 AWG conductors
- 5-8, 12, 14 and 19-pin
- 30 V, 3 A to 125 V, 8 A





### Wash Down Connector

- Wash down mold material and contact holders
- Standard or with shielding
- Stainless steel coupling nut



### Wash Down Cable

- TPV cable jacket
- Chemical resistance against cleaning agents
- Excellent flexibility
- -60 to +105 °C



### Wash Down Connector

- Wash down mold material and contact holders
- Standard or with shielding
- Stainless steel coupling nut



37

### 7/8" Thread

- Accepts 16 and 22 AWG conductors
- 2 through 6-pin
- 600 V, 9 A



38

### Instrumentation Tray/ Exposed Run/Direct Burial Cable

- UL 13 PLTC,  
UL 2250 ITC/NEC 727
- CSA CIC and shipboard listed
- FT4 flame retardant
- UV, sunlight and oil resistant
- Suitable for burial
- -40 to +90 °C



39

### 7/8" Thread

- Accepts 16 and 22 AWG conductors
- 2 through 6-pin
- 600 V, 9 A



7/8" – Minifast

7/8" – Minifast



40

### 7/8" Armored

- Shield tied to coupling nut
- 2 through 6-pin
- 600 V, 9 A



41

### Instrumentation Trays Exposed Run/ Direct Burial Cable

- UL ITC/PLTC or MC listings
- CSA ACIC
- Excellent UV and sunlight resistance
- Crush and impact resistant
- Physical protection against rodents



42

### 7/8" Armored

- Shield tied to coupling nut
- 2 through 6-pin
- 600 V, 9 A

43

### 1" Thread

- Accepts 16 and 22 AWG conductors
- 6, 7 and 8-pin
- 600 VAC/VDC, 8 A



44

### Flexible Service Cable

- SOOW and SJOOW rating
- Oil and sunlight resistant
- Excellent cut through and abrasion resistance
- -40 to +105 °C



45

### 1-1/8" Thread

- Accepts 18 and 22 AWG conductors
- 9, 10, 12 and 19-pin
- 600 VAC/VDC, 7 A



1" – Minifast

1-1/8" – Minifast



46

### M23 Thread

- Shield tied to coupling nut
- 7, 12 and 19-pin
- 150 V, 9 A to 300 V, 20 A

47

### PVC Shielded

- EMI/RFI protection
- Tray rated



48



### M23 Thread

- Shield tied to coupling nut
- 7, 12 and 19-pin
- 150 V, 9 A to 300 V, 20 A

49

### M23 Thread

- 12, 16 and 19-pin
- 150 V, 9 A to 300 V, 20 A



50

### PVC NAMUR

- Tray rated



51

### M23 Thread Push-Pull Connection

- 12 and 19-pin
- 150 V, 9 A to 300 V, 6 A



M23 – Multifast

M23 – Multifast



52

### M27 Thread

- 26 and 28-pin
- 150V, 5 A



53

### PVC Multiconductor

- 25 and 27-conductor



54

### M27 Thread

- 26 and 28-pin
- 150V, 5 A

55

### M16 Thread - Power

- Accepts 12 and 14 AWG conductors
- Shielding available
- 2, 3 and 4-pin
- 600 V, 15-18 A



56

### TC - Power Cable

- PVC or TPE
- Tray, exposed run and direct burial rated
- FT4 flame retardant
- UV, sunlight and oil resistant
- Shielding available
- Superior tensile and mechanical strength



57

### M16 Thread - Power

- Accepts 12 and 14 AWG conductors
- Shielding available
- 2, 3 and 4-pin
- 600 V, 15-18 A





58

### M23 Thread - Power

- Accepts 12, 14 and 18 AWG conductors
- 3-key
- Shielding available
- 6 and 8-pin
- 600 V, 30 A



59

### TC - Power Cable

- PVC or TPE
- Tray, exposed run and direct burial rated
- FT4 flame retardant
- UV, sunlight and oil resistant
- Shielding available
- Superior tensile and mechanical strength



60

### M23 Thread - Power

- Accepts 12, 14 and 18 AWG conductors
- 3-key
- Shielding available
- 6 and 8-pin
- 600 V, 30 A



61

### A-Size 7/8" Thread - Power

- Accepts 14 AWG conductors
- 3 and 4-pin
- 600 V, 15 A



A-Size – Powerfast

62

### TC - Power Cable

- PVC or TPE
- Tray, exposed run and direct burial rated
- FT4 flame retardant
- UV, sunlight and oil resistant
- Shielding available
- Superior tensile and mechanical strength



63

### D-Size 1 3/8" Thread - Power

- Accepts 10, 12 and 14 AWG conductors
- 3 and 4-pin
- 600 V, 15-30 A



D-Size – Powerfast



64

### PROFIBUS®-DP D-Sub Connector

- Integrated terminating switch
- Right angle and master connection option
- 250 V, 5 A



65

### PROFIBUS®-DP Cable

- Meets requirements of EN50170-2-2:1996 for communications up to 12 Mbaud
- PVC, PUR and TPU cable jackets
- Braided over foil shield
- Aluminium armor option



66

### M12 PROFIBUS®-DP Connectors

- 5-pin
- 250 V, 4 A
- Standard reverse key
- Shield-tied to coupling nut

67

### RJ45 Connector

- For Ethernet connections
- 42 V, 1.5 A
- Shielded and unshielded options



68

### Ethernet Cable, 8-wire

- Meets TIA/EIA 568-B, 2 category 5e cable for 10 and 100 Base-T Ethernet
- TPE jacket for use both indoor and outdoor
- Oil, moisture, weather and weld spatter resistant
- Flex ratings available
- -40 to +80 °C
- Other configurations available



69

### M12 Bulkhead Connector

- 8-pin
- 60 V, 2 A





70

### 7/8" Thread

- 5 pin
- 600 V, 9 A



71

### DeviceNet™ Cable, 5-wire

- Meets ODVA requirements of type I (thin), type II (thick), and type III (mid)
- PVC, TPU and TPE cable jacket
- Approval options for your specific application, including exposed run and direct burial



72

### M12 Thread DeviceNet™

- 5-pin
- 250 V, 4 A

73

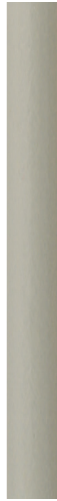
### Turck Sensor

- Connected to commercial style connector



74

### Cable Jacket Options for Any Environment



75

### Commercial Style Connector

- Connected to Turck sensor



### Turck Sensor with Weldguard® Protective Face

- Weld slag/spatter resistant
- Integral extension cable with silicone tubing



### Protective Silicone Tubing with Heat Shrink to Cable

- Weld slag/spatter resistant



### M8 Thread

- Connected to Turck sensor
- Multiple connector styles available



79

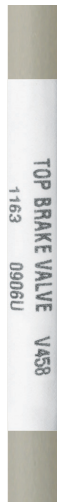
## Valve Connectors

- 8 mm to 18 mm contact spacing
- M8 to 7/8" connector extensions
- Field wireable styles
- Custom print labels



80

## Private Labeling on Cables



81

## Insulated Ferrules

- Multiple color and AWG size options
- Provides cleaner connection
- Private labeling on conductors



## Approvals

- FM, UL, CSA and ATEX approvals available



## Heat Shrinking of Conductors



## Ring Terminal and Ferrules

- Any combination





85

### D-Sub Molded or Assembled Connectors

- Connected to Turck connector
- 9, 15 and 25-pin



86

### Cable Jacket Diameters Range from 2.8 mm to 20.0 mm



87

### M23 Connector

- Connected to D-Sub Connector





### Turck Sensor

- Connected to automotive style connector

### CANbus Data Network Cable

- J1939-11
- J1939-15



### Automotive Style Connector

- Stabilizing pin
- Connected to Turck sensor



91

### Turck Sensor

- Connected to automotive style connector



92

### Cable Range

- 2 to 27 Conductors
- Braided and Foil Shielding Available



93

### Automotive Style Connector

- Connected to Turck sensor





94

### Turck Sensor

- Custom pad printing and color
- Connected to automotive style connector

95

### Reelfast® Spooled Cable Available in Any Length



96

### Automotive Style Connector

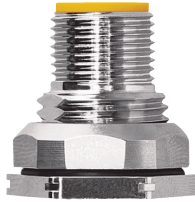
- Connected to Turck sensor



97

## M12 Receptacles

- Turck offers over 40 styles of M12 receptacles
- Front mount, rear mount, solder cups, PCB mount and more
- Connected to commercial style connector



98

## Ferrite Tubing

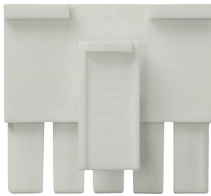
- EMI/RFI protection



99

## Commercial Style Connector

- Connected to Turck M12 receptacle



100



### Closure Cap

- Nickel plated brass or stainless steel
- For cordsets or receptacles
- With or without lanyards

101



### Closure Cap Lanyards

- Available pre-attached to cable jacket

102



### Fork Terminals

- Connected to Turck connector
- Private labeling on conductors

103

### Nylon Coupling Nut

- Turck offers nickel plated brass, nylon and 316 stainless steel coupling nut options



104

### Turck Can Process Your Cable



105

### USB Connector

- Connected to Turck connector



### Multiple Connector Mold Colors

- Yellow
- Black
- Grey
- Red
- Blue
- Green



### Custom Cable Colors

- Yellow
- Black
- Grey
- Red
- Blue
- Green



### Pigtail Option





109

### M12 Connector to Splitter

- Choose from integral connector or connector with extension cable



110

### 3 Branch Molded Splitter

- 2 and 4 branch options
- LED options
- Standard, series or parallel wiring
- Custom hot stamp printing
- Coil Cord



111

### Multiple Thread Types and Mold Colors

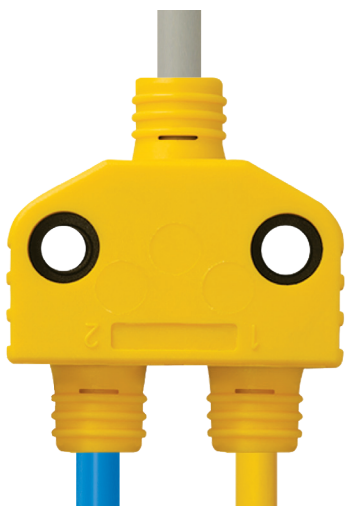
- 1/2" and M12 threads
- M12 thread reverse key (B-code)





### Right Angle Connector

- Right angles available in all thread types



### 2 Branch Molded Splitter

- 3 and 4 branch options
- LED options
- Standard, series or parallel wiring



### Molded on Automotive Style Connectors

- Multiple cable jacket colors
- Connected to Turck splitter

115

### Assembled Amp Connector

- Connected to Turck connector



Custom Solutions

116

### Halogen Free Cable

- Abrasion resistant
- UL 1061/CSA FTI



117

### PVC Plug Body

- Excellent resistance to wash down chemicals
- Available in multiple connector styles



Custom Solutions

### Weld Protection

- Weld slag resistant silicone tubing
- PTFE coated coupling nut
- LED options



### Silicone Tubing

- Excellent weld slag resistance



### Weld Protection

- Weld slag resistant silicone tubing
- PTFE coated coupling nut



121

### Expandable Fiberglass Sleeving

- Abrasion, moisture, cut-through and chemical resistant
- -55 to +200 °C
- Expandable to protect Turck connector end



122

### Expandable Fiberglass Sleeving

- Abrasion, moisture, cut-through and chemical resistant
- -55 to +200 °C



123

### AC Wall Plug

- Connected to Turck connector



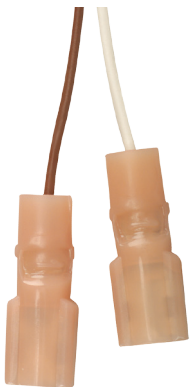


### Stainless Steel Coupling Nut

- Turck offers 316 stainless steel, nickel plated brass and nylon coupling nut options



### Over 1,200 Different Cable Types



### Insulated Spade Terminals

- Connected to Turck connector

127

### Insulated Ferrules

- Private labeling on conductors
- Connected to M16 connector



128

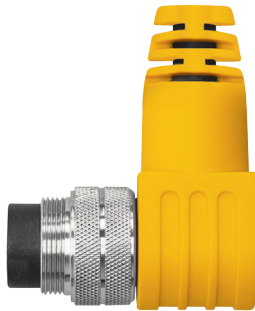
### Cable Gland



129

### M16 Thread

- Available in 5-8, 12, 14 and 19-pin
- Insulated ferrules connected on opposite end





130

### Hybrid Cordsets

- Combine multiple thread sizes in one cordset



131

### Mix and Match

- M23 thread on one end, M16 thread on the other end



132

### Hybrid Cordsets

- Combine multiple thread sizes in one cordset



133

## M16 Connectors



Custom Solutions

134

## Drop Tee

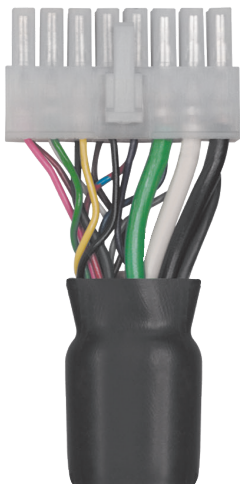


135

## Commercial Style Connector



Custom Solutions



136

### Commercial Style Connector

137

### Multiple Cable Branches

- Two cables from commercial style connector to two different receptacle types



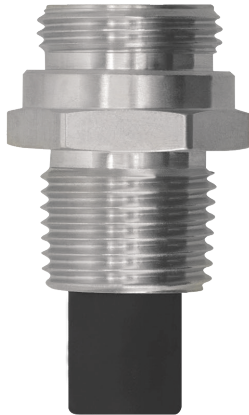
138

### Combine Multiple Receptacles

- Numerous receptacle styles in all thread sizes

139

## Overmolded Receptacle



Process Automation

140

## Process Connectivity

- 2-wire analog or HART control circuits
- Additional analog or discrete control circuits
- NAMUR circuits
- Extremelife®-60 cable
- UL ITC, PLTC and TC listings
- Exposed run and direct burial



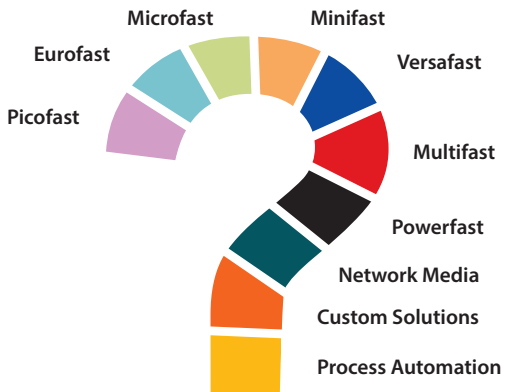
141

## M23 Home Run Connector with Set Screw Locks

- For Class I, Division 2 hazardous locations
- Render a connection not normally arcing



Process Automation

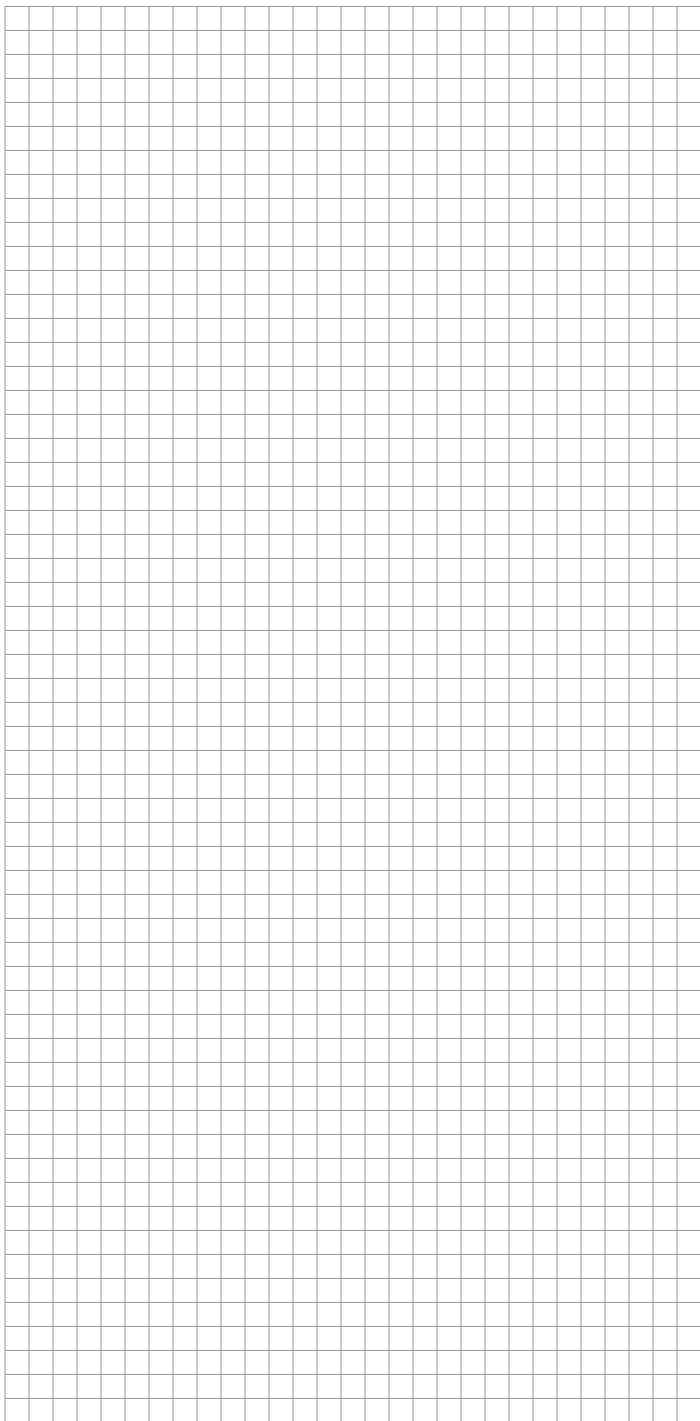


**CONNECT IT YOUR WAY**




Our experienced engineers are ready to assist you.  
**1-800-544-7769**

# NOTES



# TURCK



28 subsidiaries and over  
60 representations worldwide!

Printed in USA

©2016 by Turck Inc. All rights reserved. No part of the  
publication may be reproduced without written permission.

[www.turck.com](http://www.turck.com)