

Your Global Automation Partner

# TURCK

## IMX Interface Series Selection Guide



# IMX Interface Series

Interface devices are the true all-around solutions for the control cabinet. They combine protecting, isolating, converting and supply tasks in the smallest space. A further challenge are the requirements in standards. In this environment, the users expect reliability, precision and safety.

Turck sets a new standard in the field of Ex safety barriers and Ex analog signal isolators with the IMX interface device series. Fast and precise signal processing in the smallest space, reliable supply of connected instrumentation and long maintenance-free operation are the most important criteria in the selection.

The IMX series sets standards in many respects. The devices were developed according to the current standards. You benefit from investment security and availability for a long period of time. The devices of the IMX series are designed for processing of switching, NAMUR, frequency, current, voltage and resistance signals.



### Reliable

Turck builds on many years of experience in the field of interface technology. The IMX series combines this experience with state-of-the-art technology. We offer an excellent basis for securing your investments, in the long term and under changing market conditions.

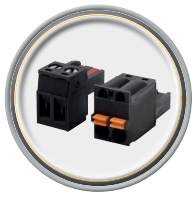


### Global

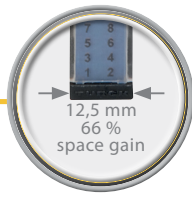
Turck is a globally operating company, fulfilling requirements in international markets. We offer worldwide approvals, and ensure the applicability of devices in different systems.



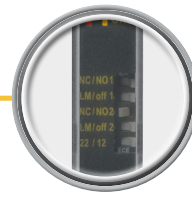
Clear signalling acc. to NE44



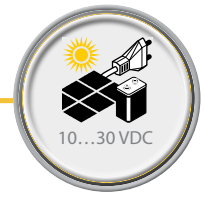
Screw or cage clamp terminals



- Up to 66 % space gain
- 4 terminal strips
- IMX12 series: 12.5 mm width and 120 mm depth
- IMXK series: 12.5 mm width and 77 mm depth



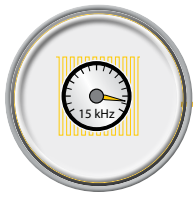
- Simple operation
- DIP switch
- Parameterizable via FDT/DTM



Wide power supply range



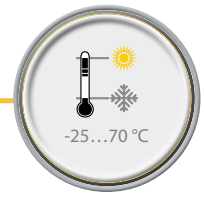
Best total performance @ 40 °C for analog signal isolators



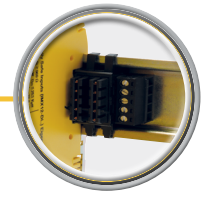
Fastest isolating switching amplifier up to 15 kHz



Independent of mounting position -25...+70 °C



Wide temperature range



Power rail + Collective fault signal optional

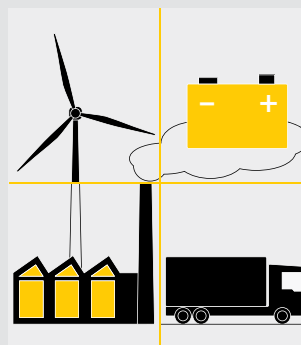


Use in Zone 2



### Safe

Safety first – is a maxim at Turck. With the IMX series, we want to contribute to your system security. All devices have been developed and manufactured in accordance with the requirements of the IEC61508 and can be used in safety circuits up to SIL2.



### Flexible

No application is similar to the other. This provides a high degree of adaptability of the instrumentation. With diverse functionality and a wide voltage range of 10 to 30 VDC, the IMX series is tailored to these requirements.

# IMX Interface Series - Part Number Key

IMX12 - DI03 - 1S - 2R - SPR / 24VDC / CC

**Housing**

IMX12 = ex 12.5 mm wide and 120 mm depth  
 IMXK12 = ex 12.5 mm wide and 77 mm depth

**Device Type & Device Function**

- DI = Digital Input
  - 1 = line fault monitoring
  - 2 = no line fault monitoring
  - 3 = line fault monitoring with selectable alarm output
- FI = Frequency Input
  - 1 = NAMUR/dry contact, or pulse
  - 2 = NAMUR/dry contact, or pulse, or 3-wire
- AI = Analog Input
  - 1 = 4...20 mA active/passive line fault monitoring
  - 2 = 4...20 mA active/passive no line fault monitoring
  - 3 = 0/4...20 mA active/passive
  - 4 = 4...20 mA passive
  - 5 = 0/4...20 mA passive
- TI = Temperature Input
  - 1 = 2-4 wire RTD
  - 2 = Thermocouple, or 3-4 wire RTD, or mV
  - 3 = Thermocouple, or mV
- AO= Analog Output
  - 1 = 4...20 mA active with line fault monitoring
  - 2 = 4...20 mA active no line fault monitoring
- DO= Digital Output
  - 1 = curve 1 with line fault monitoring
  - 2 = curve 2 with line fault monitoring
  - 3 = curve 3 with line fault monitoring
  - 4 = curve 4 with line fault monitoring
  - 5 = curve 5 with line fault monitoring
- CD= Coupling Device
  - 1 = behavior over terminal blocks
- PA = Potentiometer Amplifier
  - 2 = 3-5 wire

**Terminal Electrical Connection**

CC = spring terminals  
 Blank = screw terminals

**Supply**

24 VDC = 10...30 VDC  
 L = loop power

**Special Function**

H = hart  
 C = parametrized via PC  
 PR = power bridge  
 S = alarm output  
 0 = none

**Output/DCS Side**

Channels	Signal Type
1	I = current
2	U = voltage
	T = potential free transistor
	PNP = positive switching transistor
	NPN = negative switching transistor
	MT = mosfet
	R = relay
	RTD = resistor temperature detector
	NAM = NAMUR
	F = frequency
	PP = push pull (level)

**Input/Field Side**

Channels	Signal Type
1	S = switch
2	NAM = NAMUR
	F = frequency
	I = current
	U = voltage
	TC = thermocouple
	RTD = resistor temperature detector
	POT = potentiometer
	R = resistor
	MTIS = moisture temperature infrared switch

# IMX Interface Series - Types and Features

## Digital Input Barriers

Approvals/Certifications: SIL 2, FM, UL, IECEx, ATEX, NEPSI, KOSHA, INMETRO, TIIS, TR CU EAC

ID Number	Part Number	Input/Field			Output/DCS						Power		Terminal	
		Channels	Line Monitoring*	NAMUR/Dry Contact	Channels	NAMUR	Relay	Transistor	Push-Pull	Alarm	Connector	Power Bridge**	Screw	Spring
7580000	IMX12-DI03-1S-1NAM1R-0/24VDC	1	S	•	2	•	•				•		•	
7580001	IMX12-DI03-1S-1NAM1R-PR/24VDC	1	S	•	2	•	•					•	•	
7580002	IMX12-DI03-1S-1NAM1R-0/24VDC/CC	1	S	•	2	•	•				•			•
7580003	IMX12-DI03-1S-1NAM1R-PR/24VDC/CC	1	S	•	2	•	•					•		•
7580004	IMX12-DI03-1S-1NAM1T-0/24VDC	1	S	•	2	•		•			•		•	
7580005	IMX12-DI03-1S-1NAM1T-PR/24VDC	1	S	•	2	•		•				•	•	
7580006	IMX12-DI03-1S-1NAM1T-0/24VDC/CC	1	S	•	2	•		•			•			•
7580007	IMX12-DI03-1S-1NAM1T-PR/24VDC/CC	1	S	•	2	•		•				•		•
7580008	IMX12-DI03-1S-2R-S/24VDC	1	S	•	2		•			•	•		•	
7580009	IMX12-DI03-1S-2R-SPR/24VDC	1	S	•	2		•			•		•	•	
7580010	IMX12-DI03-1S-2R-S/24VDC/CC	1	S	•	2		•			•	•			•
7580011	IMX12-DI03-1S-2R-SPR/24VDC/CC	1	S	•	2		•			•		•		•
7580012	IMX12-DI03-1S-2T-S/24VDC	1	S	•	2			•		•	•		•	
7580013	IMX12-DI03-1S-2T-SPR/24VDC	1	S	•	2			•		•		•	•	
7580014	IMX12-DI03-1S-2T-S/24VDC/CC	1	S	•	2			•		•	•			•
7580015	IMX12-DI03-1S-2T-SPR/24VDC/CC	1	S	•	2			•		•		•		•
7580016	IMX12-DI01-2S-2R-0/24VDC	2	S	•	2		•				•		•	
7580017	IMX12-DI01-2S-2R-PR/24VDC	2	S	•	2		•					•	•	
7580018	IMX12-DI01-2S-2R-0/24VDC/CC	2	S	•	2		•				•			•
7580019	IMX12-DI01-2S-2R-PR/24VDC/CC	2	S	•	2		•					•		•
7580020	IMX12-DI01-2S-2T-0/24VDC	2	S	•	2			•			•		•	
7580021	IMX12-DI01-2S-2T-PR/24VDC	2	S	•	2			•				•	•	
7580022	IMX12-DI01-2S-2T-0/24VDC/CC	2	S	•	2			•			•			•
7580023	IMX12-DI01-2S-2T-PR/24VDC/CC	2	S	•	2			•				•		•
7580024	IMX12-DI01-2S-2PP-0/24VDC	2	S	•	2				•		•		•	
7580025	IMX12-DI01-2S-2PP-PR/24VDC	2	S	•	2				•			•	•	
7580026	IMX12-DI01-2S-2PP-0/24VDC/CC	2	S	•	2				•		•			•
7580027	IMX12-DI01-2S-2PP-PR/24VDC/CC	2	S	•	2				•			•	•	

\* F = Fixed, S = Selectable

\*\* The power bridge is a connector based system comprised of an optional power supply module which feeds power to all devices via a power bridge connector. (See accessories on page 8)

# IMX Interface Series - Types and Features

## Digital Output Barriers

Approvals/Certifications: SIL 2, FM, UL, IECEx, ATEX, NEPSI, KOSHA, INMETRO, TIIS, TR CU EAC

ID Number	Part Number	Input/Field		Output/DCS		Power		Terminal	
		Channels	Line Monitoring*	Channels	10-30 VDC	Connector	Power Bridge**	Screw	Spring
7580100	IMX12-DO01-1U-1U-PR/24VDC	1	F	1	•	•	•	•	
7580101	IMX12-DO01-1U-1U-0/24VDC	1	F	1	•	•	•	•	
7580102	IMX12-DO01-1U-1U-PR/24VDC/CC	1	F	1	•	•	•	•	
7580103	IMX12-DO01-1U-1U-0/24VDC/CC	1	F	1	•	•	•	•	
7580104	IMX12-DO01-2U-2U-PR/24VDC	2	F	2	•	•	•	•	
7580105	IMX12-DO01-2U-2U-0/24VDC	2	F	2	•	•	•	•	
7580106	IMX12-DO01-2U-2U-PR/24VDC/CC	2	F	2	•	•	•	•	
7580107	IMX12-DO01-2U-2U-0/24VDC/CC	2	F	2	•	•	•	•	

\* F = Fixed, S = Selectable

\*\* The power bridge is a connector based system comprised of an optional power supply module which feeds power to all devices via a power bridge connector. (See accessories on page 8)

## Analog Input Barriers

Approvals/Certifications: SIL 2, FM, UL, IECEx, ATEX, NEPSI, KOSHA, INMETRO, TIIS, TR CU EAC

ID Number	Part Number	Input/Field				Output/DCS				Power		Terminal	
		Channels	Line Monitoring*	4-20 mA Source/Sink	HART	Channels	4-20 mA Source/Sink	1-5 V Source	HART	Connector	Power Bridge**	Screw	Spring
7580300	IMX12-AI01-1I-2IU-HPR/24VDC	1	F	•	•	1	•	•	•	•	•	•	
7580302	IMX12-AI01-1I-2IU-HPR/24VDC/CC	1	F	•	•	1	•	•	•	•	•	•	
7580301	IMX12-AI01-1I-2IU-H0/24VDC	1	F	•	•	2	•	•	•	•	•	•	
7580303	IMX12-AI01-1I-2IU-H0/24VDC/CC	1	F	•	•	2	•	•	•	•	•	•	
7580304	IMX12-AI01-2I-2IU-HPR/24VDC	2	F	•	•	2	•	•	•	•	•	•	
7580305	IMX12-AI01-2I-2IU-H0/24VDC	2	F	•	•	2	•	•	•	•	•	•	
7580306	IMX12-AI01-2I-2IU-HPR/24VDC/CC	2	F	•	•	2	•	•	•	•	•	•	
7580307	IMX12-AI01-2I-2IU-H0/24VDC/CC	2	F	•	•	2	•	•	•	•	•	•	
7580312	IMX12-AI01-1I-1IU-HPR/24VDC	1	F	•	•	1	•	•	•	•	•	•	
7580313	IMX12-AI01-1I-1IU-H0/24VDC	1	F	•	•	1	•	•	•	•	•	•	
7580314	IMX12-AI01-1I-1IU-HPR/24VDC/CC	1	F	•	•	1	•	•	•	•	•	•	
7580315	IMX12-AI01-1I-1IU-H0/24VDC/CC	1	F	•	•	1	•	•	•	•	•	•	

# IMX Interface Series - Types and Features

## Analog Output Barriers

Approvals/Certifications: SIL 2, FM, UL, IECEx, ATEX, NEPSI, KOSHA, INMETRO, TIIS, TR CU EAC

ID Number	Part Number	Input/Field				Output/DCS			Power		Terminal	
		Channels	Line Monitoring*	4-20 mA Source	HART	Channels	4-20 mA Sink	HART	Connector	Power Bridge**	Screw	Spring
7580400	IMX12-AO01-1I-1I-HPR/24VDC	1	F	•	•	1	•	•	•	•	•	•
7580401	IMX12-AO01-1I-1I-H0/24VDC	1	F	•	•	1	•	•	•	•	•	•
7580402	IMX12-AO01-1I-1I-HPR/24VDC/CC	1	F	•	•	1	•	•	•	•	•	•
7580403	IMX12-AO01-1I-1I-H0/24VDC/CC	1	F	•	•	1	•	•	•	•	•	•
7580404	IMX12-AO01-2I-2I-HPR/24VDC	2	F	•	•	2	•	•	•	•	•	•
7580405	IMX12-AO01-2I-2I-H0/24VDC	2	F	•	•	2	•	•	•	•	•	•
7580406	IMX12-AO01-2I-2I-HPR/24VDC/CC	2	F	•	•	2	•	•	•	•	•	•
7580407	IMX12-AO01-2I-2I-H0/24VDC/CC	2	F	•	•	2	•	•	•	•	•	•

\* F = Fixed, S = Selectable

\*\* The power bridge is a connector based system comprised of an optional power supply module which feeds power to all devices via a power bridge connector. (See accessories on page 8)

## Analog Temperature Barriers

Approvals/Certifications: SIL 2, FM, UL, IECEx, ATEX, NEPSI, KOSHA, INMETRO, TIIS, TR CU EAC

Configuration: PC Port\*\*\*

ID Number	Part Number	Input/Field						Output/DCS			Power		Terminal		
		Channels	Line Monitoring*	2, 3, 4-wire RTD	2, 3-wire RTD	mV	Thermocouple	Resistor	Channels	Relay	0/4-20 mA Source/Sink	Connector	Power Bridge**	Screw	Spring
7580504	IMX12-TI02-1TCURTD-1I1R-CPR/24VDC	1	F	•		•	•	•	2	•	•	•	•	•	•
7580505	IMX12-TI02-1TCURTD- 1I1R-C0/24VDC	1	F	•		•	•	•	2	•	•	•	•	•	•
7580506	IMX12-TI02-1TCURTD-1I1R-CPR/24VDC/CC	1	F	•		•	•	•	2	•	•	•	•	•	•
7580507	IMX12-TI02-1TCURTD-1I1R-C0/24VDC/CC	1	F	•		•	•	•	2	•	•	•	•	•	•
7580508	IMX12-TI02-2TCURTD-2I-CPR/24VDC	2	F		•	•	•	•	2	•	•	•	•	•	•
7580509	IMX12-TI02-2TCURTD-2I-C0/24VDC	2	F		•	•	•	•	2	•	•	•	•	•	•
7580510	IMX12-TI02-2TCURTD-2I-CPR/24VDC/CC	2	F		•	•	•	•	2	•	•	•	•	•	•
7580511	IMX12-TI02-2TCURTD-2I-C0/24VDC/CC	2	F		•	•	•	•	2	•	•	•	•	•	•
7580512	IMX12-TI01-2RTDR-2I-CPR/24VDC	2	F	•				•	2	•	•	•	•	•	•
7580513	IMX12-TI01-2RTDR-2I-C0/24VDC	2	F	•				•	2	•	•	•	•	•	•
7580514	IMX12-TI01-2RTDR-2I-CPR/24VDC/CC	2	F	•				•	2	•	•	•	•	•	•
7580515	IMX12-TI01-2RTDR-2I-C0/24VDC/CC	2	F	•				•	2	•	•	•	•	•	•

# IMX Interface Series - Types and Features

## Frequency Barriers

Approvals/Certifications: SIL 2, FM, UL, IECEx, ATEX, NEPSI, KOSHA, INMETRO, TIIS, TR CU EAC

Configuration: PC Port\*\*\*

ID Number	Part Number	Input/Field			Output/DCS			Power		Terminal	
		Channels	Line Monitoring*	NAMUR/Dry Contact	Channels	Relay	0/4-20 mA Source/Sink	Connector	Power Bridge**	Screw	Spring
7580204	IMX12-FI01-1SF-1I1R-CPR/24VDC	1	F	•	2	•	•	•	•	•	•
7580205	IMX12-FI01-1SF-1I1R-C0/24VDC	1	F	•	2	•	•	•	•	•	•
7580206	IMX12-FI01-1SF-1I1R-CPR/24VDC/CC	1	F	•	2	•	•	•	•	•	•
7580207	IMX12-FI01-1SF-1I1R-C0/24VDC/CC	1	F	•	2	•	•	•	•	•	•
7580208	IMX12-FI01-2SF-2I-CPR/24VDC	2	F	•	2	•	•	•	•	•	•
7580209	IMX12-FI01-2SF-2I-C0/24VDC	2	F	•	2	•	•	•	•	•	•
7580210	IMX12-FI01-2SF-2I-CPR/24VDC/CC	2	F	•	2	•	•	•	•	•	•
7580211	IMX12-FI01-2SF-2I-C0/24VDC/CC	2	F	•	2	•	•	•	•	•	•

\* F = Fixed, S = Selectable

\*\* The power bridge is a connector based system comprised of an optional power supply module which feeds power to all devices via a power bridge connector. (See accessories on page 8)

\*\*\* PC configuration requires M12 to serial cable and USB Master. (See accessories on page 8)

## Frequency Barriers

Approvals/Certifications: SIL 2, FM, UL, IECEx, ATEX, NEPSI, KOSHA, INMETRO, TIIS, TR CU EAC

Configuration: PC Port\*\*\*

ID Number	Part Number	Input/Field			Output/DCS			Power		Terminal	
		Channels	Line Monitoring*	NAMUR/Dry Contact	Channels	Relay	0/4-20 mA Source/Sink	Connector	Power Bridge**	Screw	Spring
7580200	IMX12-FI01-1SF-1R-PR/24VDC	1	F	•	1	•	•	•	•	•	•
7580201	IMX12-FI01-1SF-1R-0/24VDC	1	F	•	1	•	•	•	•	•	•
7580202	IMX12-FI01-1SF-1R-PR/24VDC/CC	1	F	•	1	•	•	•	•	•	•
7580203	IMX12-FI01-1SF-1R-0/24VDC/CC	1	F	•	1	•	•	•	•	•	•
7580204	IMX12-FI01-1SF-1I1R-CPR/24VDC	1	F	•	2	•	•	•	•	•	•
7580205	IMX12-FI01-1SF-1I1R-C0/24VDC	1	F	•	2	•	•	•	•	•	•
7580206	IMX12-FI01-1SF-1I1R-CPR/24VDC/CC	1	F	•	2	•	•	•	•	•	•
7580207	IMX12-FI01-1SF-1I1R-C0/24VDC/CC	1	F	•	2	•	•	•	•	•	•
7580208	IMX12-FI01-2SF-2I-CPR/24VDC	2	F	•	2	•	•	•	•	•	•
7580209	IMX12-FI01-2SF-2I-C0/24VDC	2	F	•	2	•	•	•	•	•	•
7580210	IMX12-FI01-2SF-2I-CPR/24VDC/CC	2	F	•	2	•	•	•	•	•	•
7580211	IMX12-FI01-2SF-2I-C0/24VDC/CC	2	F	•	2	•	•	•	•	•	•

\* F = Fixed, S = Selectable

\*\* The power bridge is a connector based system comprised of an optional power supply module which feeds power to all devices via a power bridge connector. (See accessories on page 8)

\*\*\* PC configuration requires M12 to serial cable and USB Master. (See accessories on page 8)



# IMX Interface Series - Types and Features

## Relay Coupler Barriers

Approvals/Certifications: SIL 2, SIL 3\*,  
FM, UL, IECEx, ATEX, NEPSI, KOSHA,  
INMETRO, TIIS, TR CU EAC

ID Number	Part Number	Input/DCS		Output/Field		Power	Terminal	
		Channels	10...30 VDC	Channels	Relay	Loop-powered	Screw	Spring
7580620	IMX12-CD01-2R-2U-0/L	3	•	3	•	•	•	•
7580621	IMX12-CD01-2R-2U-0/L/CC	3	•	3	•	•	•	•

\* Reference datasheet/safety manual for details

## Analog Input Barriers

Approvals: SIL 2, UL, IECEx, ATEX

ID Number	Part Number	Input				Output			Power	Terminal			
		Channels	Line Monitoring*	4-20 mA Source/Sink	HART	Channels	4-20 mA Source/Sink	1-5 V Source	HART	Connector	Power Rail**	Screw	Cage Clamp
100000687	IMXK12-AI01-1I-1I-H0/24VDC	1	F	•	•	1	•	•	•	•	•	•	•
100000688	IMXK12-AI01-1I-1I-H0/24VDC/CC	1	F	•	•	1	•	•	•	•	•	•	•

## Digital Output Barriers

Approvals: SIL 2, UL, IECEx, ATEX

ID Number	Part Number	Input		Output		Power	Terminal	
		Channels	Line Monitoring*	Channels	10-30 VDC	Connector	Power Rail**	Screw
100000709	IMXK12-DO01-1U-1U-0/24VDC	1	F	1	•	•	•	•
100000710	IMXK12-DO01-1U-1U-0/24VDC/CC	1	F	1	•	•	•	•

## Analog Output Barriers

Approvals: SIL 2, UL, IECEx, ATEX

ID Number	Part Number	Input				Output			Power	Terminal			
		Channels	Line Monitoring*	4-20 mA Source/Sink	HART	Channels	4-20 mA Source/Sink	1-5 V Source	HART	Connector	Power Rail**	Screw	Cage Clamp
100000703	IMXK12-AO01-1I-1I-H0/24VDC	1	F	•	•	1	•	•	•	•	•	•	•
100000704	IMXK12-AO01-1I-1I-H0/24VDC/CC	1	F	•	•	1	•	•	•	•	•	•	•

\* F = Fixed, S = Selectable

\*\* The power rail is a connector based system comprised of an optional power supply module which feeds power to all devices via a power bridge connector. (See accessories on page 9)

# IMX Interface Series - Types and Features

## Analog Input Barriers

Approvals: SIL 2, UL, IECEx, ATEX

ID Number	Part Number	Input				Output			Power		Terminal		
		Channels	Line Monitoring*	4-20 mA Source/Sink	HART	Channels	4-20 mA Source/Sink	1-5 V Source	HART	Connector	Power Rail**	Screw	Cage Clamp
100000687	IMXK12-AI01-1I-1I-H0/24VDC	1	F	•	•	1	•	•	•	•		•	
100000688	IMXK12-AI01-1I-1I-H0/24VDC/CC	1	F	•	•	1	•	•	•	•			•

## Digital Output Barriers

Approvals: SIL 2, UL, IECEx, ATEX

ID Number	Part Number	Input		Output		Power		Terminal	
		Channels	Line Monitoring*	Channels	10-30 VDC	Connector	Power Rail**	Screw	Cage Clamp
100000709	IMXK12-DO01-1U-1U-0/24VDC	1	F	1	•	•		•	
100000710	IMXK12-DO01-1U-1U-0/24VDC/CC	1	F	1	•	•			•

## Analog Output Barriers

Approvals: SIL 2, UL, IECEx, ATEX

ID Number	Part Number	Input				Output			Power		Terminal		
		Channels	Line Monitoring*	4-20 mA Source/Sink	HART	Channels	4-20 mA Source/Sink	1-5 V Source	HART	Connector	Power Rail**	Screw	Cage Clamp
100000703	IMXK12-AO01-1I-1I-H0/24VDC	1	F	•	•	1	•	•	•	•		•	
100000704	IMXK12-AO01-1I-1I-H0/24VDC/CC	1	F	•	•	1	•	•	•	•			•

\* F = Fixed, S = Selectable

\*\* The power rail is a connector based system comprised of an optional power supply module which feeds power to all devices via a power bridge connector. (See accessories on page 9)

# IMX Interface Series – Types and Features

ID	Type code	Description
<a href="#">7580000</a>	IMX12-DI03-1S-1NAM1R-0/24VDC	1-channel isolating switching amplifier with relay output, NAMUR-Repeater
<a href="#">7580004</a>	IMX12-DI03-1S-1NAM1T-0/24VDC	1-channel isolating switching amplifier with transistor output, NAMUR-Repeater
<a href="#">7580008</a>	IMX12-DI03-1S-2R-S/24VDC	1-channel isolating switching amplifier with relay output, splitter function or alarm output
<a href="#">7580012</a>	IMX12-DI03-1S-2T-S/24VDC	1-channel isolating switching amplifier with transistor output, splitter function or alarm output
<a href="#">7580016</a>	IMX12-DI01-2S-2R-0/24VDC	2-channel isolating switching amplifier with relay output
<a href="#">7580020</a>	IMX12-DI01-2S-2T-0/24VDC	2-channel isolating switching amplifier with transistor output
<a href="#">7580024</a>	IMX12-DI01-2S-2PP-0/24VDC	2-channel isolating switching amplifier with push-pull output stage
<a href="#">7580101</a>	IMX12-DO01-1U-1U-0/24VDC	1-channel solenoid driver
<a href="#">100000709</a>	IMXK12-DO01-1U-1U-0/24VDC	1-channel solenoid driver
<a href="#">100000710</a>	IMXK12-DO01-1U-1U-0/24VDC/CC	1-channel solenoid driver
<a href="#">7580105</a>	IMX12-DO01-2U-2U-0/24VDC	2-channel solenoid driver
<a href="#">7580313</a>	IMX12-AI01-1I-1IU-H0/24VDC	1-channel HART® isolating transducer
<a href="#">100000687</a>	IMXK12-AI01-1I-1IU-H0/24VDC	1-channel HART® isolating transducer
<a href="#">100000688</a>	IMXK12-AI01-1I-1IU-H0/24VDC/CC	1-channel HART® isolating transducer
<a href="#">7580301</a>	IMX12-AI01-1I-2IU-H0/24VDC	1-channel HART® isolating transducer with splitter function
<a href="#">7580305</a>	IMX12-AI01-2I-2IU-H0/24VDC	2-channel HART® isolating transducer
<a href="#">7580401</a>	IMX12-AO01-1I-1I-H0/24VDC	1-channel HART® output analog signal isolator
<a href="#">100000703</a>	IMXK12-AO01-1I-1I-H0/24VDC	1-channel HART® output analog signal isolator
<a href="#">100000704</a>	IMXK12-AO01-1I-1I-H0/24VDC/CC	1-channel HART® output analog signal isolator
<a href="#">7580405</a>	IMX12-AO01-2I-2I-H0/24VDC	2-channel HART® output analog signal isolator
<a href="#">7580505</a>	IMX12-TI02-1TCURTRDR-1I1R-C0/24VDC	1-channel universal temperature transducer with current output and limit value
<a href="#">7580509</a>	IMX12-TI02-2TCURTRDR-2I-C0/24VDC	2-channel universal temperature transducer with current output
<a href="#">7580209</a>	IMX12-FI01-2SF-2I-C0/24VDC	2-channel frequency transducer with current output
<a href="#">7580205</a>	IMX12-FI01-1SF-1I1R-C0/24VDC	1-channel frequency transducer with current output and limit value
<a href="#">7580620</a>	IMX12-CD-2R-2U-O/L	2-channel relay coupler up to SIL3
<a href="#">7580610</a>	IMX12-PS02-UI-UIR-PR/24VDC	Power supply for power-bridge modules

Devices with power bridge and cage clamp terminals are optionally available



Products are linked with further information.

# IMX Interface Series - Types and Features



### Availability/Reliability

- Transparent cover

### Easily mounted

- Power supply via optional power bridge

### High channel density

- 4 connection possibilities on each side

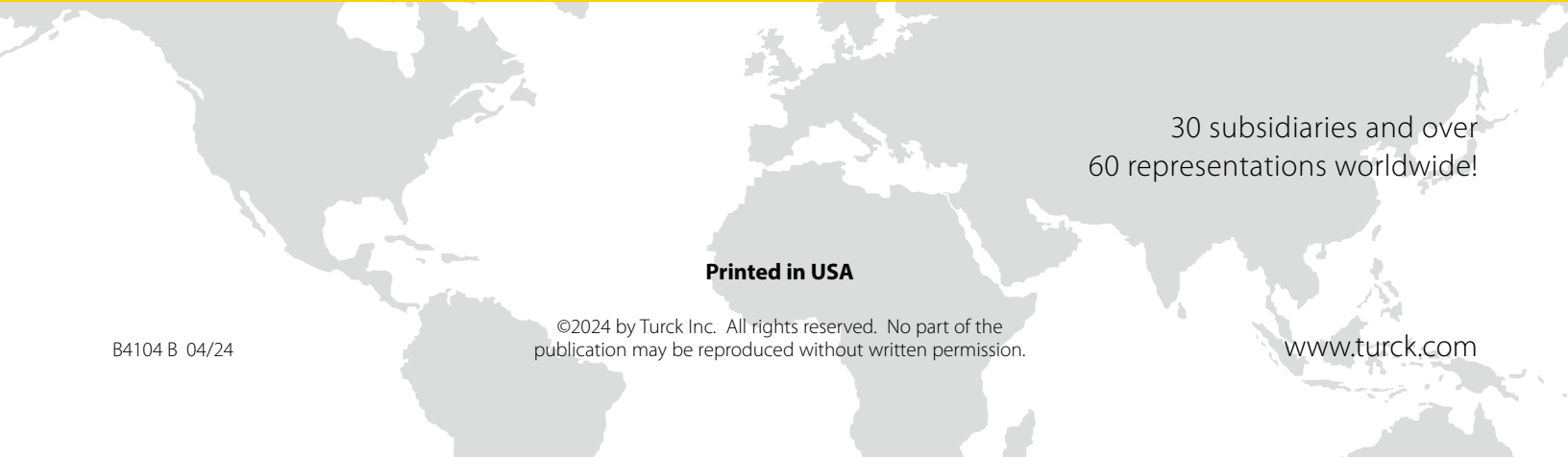
Dimensions	Technical data	IMX12
	Operating voltage	10...30 VDC
	Suitable for use in safety circuits up to	SIL 2 acc. to IEC 61508
	Dimensions	120 x 12.5 x 117 mm
	Application areas	II (1) G, II (1) D
	Explosion protection type	[Ex ia Ga] IIC; [Ex ia Da] IIIC Ex nA nC [ia Ga] IIC/IIB T4 Gc
	Ambient temperature	-25...+70 °C

Dimensions	Technical data	IMXK12
	Operating voltage	10...30 VDC
	Suitable for use in safety circuits up to	SIL 2 acc. to IEC 61508
	Dimensions	77 x 12.5 x 126 mm
	Application areas	II (1) G, II (1) D
	Explosion protection type	[Ex ia Ga] IIC; [Ex ia Da] IIIC Ex nA nC [ia Ga] IIC/IIB T4 Gc
	Ambient temperature	-25...+70 °C

## Accessories

ID	Part Number	Description
7580943	IMX12-CC-2X-4BU	Removable spring terminals, 2-pin, Blue (4pcs)
7580941	IMX12-SC-2X-4BU	Removable screw terminals, 2-pin, Blue (4pcs)
7580942	IMX12-CC-2X-4BK	Removable spring terminals, 2-pin, Black (4pcs)
7580940	IMX12-SC-2X-4BK	Removable screw terminals, 2-pin, Black (4pcs)
7580610	IMX12-PS02-UI-UIR-PR/24VDC	Power supply module w/removable screw terminals
7580611	IMX12-PS02-UI-UIR-PR/24VDC/CC	Power supply module w/removable spring terminals
7525110	IOL-COM/3M	M12 to serial plug device cable
6825482	USB-2-IOL-0002	USB to M12 IO-Link Master

# TURCK



30 subsidiaries and over  
60 representations worldwide!

**Printed in USA**

©2024 by Turck Inc. All rights reserved. No part of the  
publication may be reproduced without written permission.

B4104 B 04/24

[www.turck.com](http://www.turck.com)