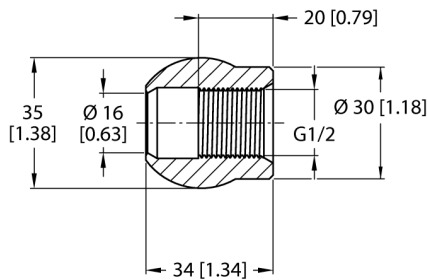


Accessories

Ball Sleeve without Control Bore

For NCLS Capacitive Limit Level Sensors

NCLS-WA4



Type	NCLS-WA4
ID	100004432
Mounting location	any
Installation information	Welding work required!
Process Pressure	10 bar
Medium temperature	0...+140 °C
CIP/SIP-capable	yes
Tests/approvals	
Warning	Protect against mechanical damage
Mechanical data	
Design	Accessories for threaded barrels
Dimensions	34 x 35 x 35 mm
Housing material	Stainless steel, 1.4404 (AISI 316L)
Materials (contact with media)	Stainless steel 1.4404 (AISI 316L)
Process connection	Welded installation
Protection class	IP67
	When installed

- Welding sleeve for pipes/pipe bends and inclined installation
- HPC-Sleeve No. 1
- Suitable for NCLS limit level sensors

Functional principle

The welding concept for limit level sensors from the NCLS product series allows process adapters to be freely positioned without threads in a flow channel or tank.

The welding adapter is welded on to the corresponding exterior wall of the stainless steel tank or pipe. The sensor is then fixed directly into the adapter (or the welding sleeve).

The screw-in adapters are available in all standard industrial shapes and sizes. The system consisting of the sensor and welding adapter can therefore be adjusted easily to a wide range of application requirements.