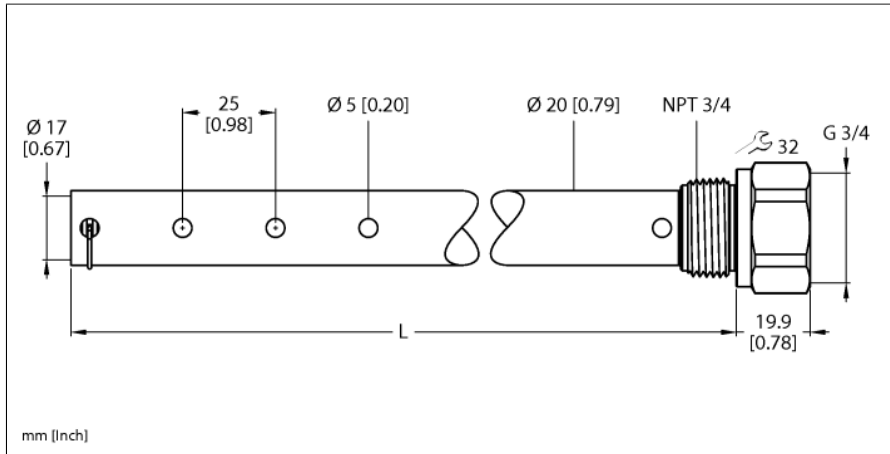


# Accessories

## Coaxial Tube

### For LS-5 Series

#### LSCT-34-2000



Type	LSCT-34-2000
ID	100015816
Remark to product	Attention: Coaxial tubes (accessories) are only available for LS-551 level sensors with process connection G3/4".
Application area	liquids
Probe length (L)	2000 mm
<b>Mechanical data</b>	
Material	Stainless steel, 1.4571
Process connection	3/4" NPT
Included in delivery	Centering set for LSCT-...

- Multiple output signals: one system for both level detection and continuous level monitoring
- Low maintenance and quick commissioning without calibration
- High flexibility due to cutable probe
- Compact, rotatable display housing ensures easy installation
- Small inactive areas, ideal for small containers
- Process temperature to 212 °F
- Process pressure up to 145 psi
- Coaxial tubes available for non-metallic tanks
- IO-Link 1.1

#### Functional principle

The LS-5 series liquid level sensors use time-of-flight technology to measure electromagnetic waves to generate a level signal. The advanced technology enables calibration free commissioning with probes that can be cut to length for quick integration into most applications. Highly resistant to deposit formations with no moving parts, the LS-5 series offers significant cost saving due to multiple output signals for both continuous level detection and point level monitoring. Simply setup with four buttons and integral display, or through an IO-Link interface

## Accessories

Type code	Ident-No.		Dimension drawing
LSAB2	100016515	PTFE centering star for mounting probes in the LS-5 product series in LSCT-xx-xxxx coaxial tubes	