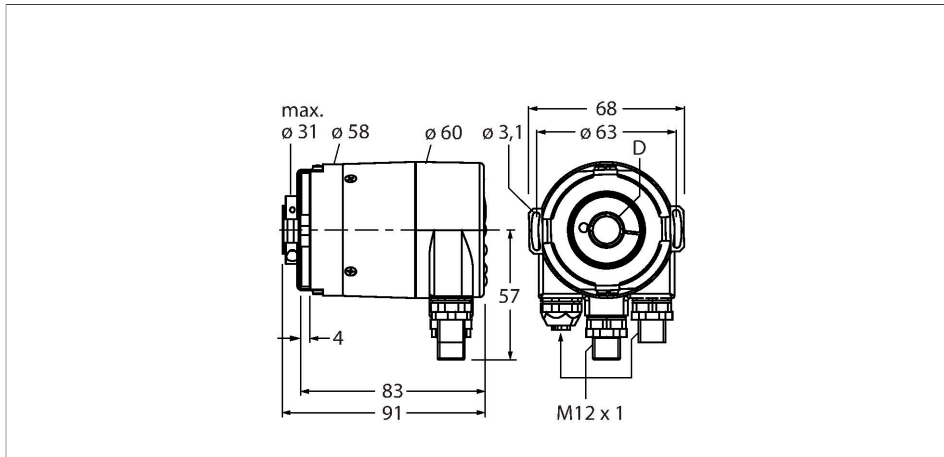


# RM-36B12E-9C28B-R3M12

## Absolute Rotary Encoder - Multiturn Industrial Line

### Features

- Flange with stator coupling, Ø 63 mm
- Hollow shaft, Ø 12 mm
- Optical measuring principle
- Shaft material: stainless steel
- Protection class IP67 on shaft side
- -40...+80 °C
- Max. 3000 rpm
- EtherCAT®
- Removable bus cover with male, 3 × M12
- Singleturn, resolution scalable to 16 bit (default 13-bit)
- Multiturn resolution max. 12 bit, scalable



### Technical data

Type	RM-36B12E-9C28B-R3M12
ID	1544446
Measuring principle	Optical
<b>General data</b>	
Max. rotational speed	3000 rpm
Moment of inertia of the rotor	$7.5 \times 10^{-6} \text{ kgm}^2$
Starting torque	< 0.05 Nm
Output type	Absolute multiturn
Resolution singleturn	16 Bit
Resolution multiturn	12 Bit
	single-turn scalable
<b>Electrical data</b>	
Operating voltage $U_B$	10...30 VDC
No-load current	≤ 120 mA
Wire break/reverse polarity protection	yes
Communication protocol	EtherCAT
<b>Mechanical data</b>	
Flange type	Flange with stator coupling
Flange diameter	Ø 63 mm
Shaft Type	Blind hole shaft
Shaft diameter D (mm)	12
Shaft material	Stainless steel
Housing material	Die-cast zinc

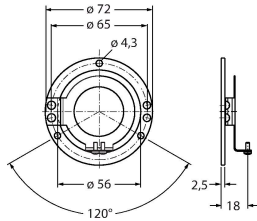
## Technical data

Electrical connection	Bus connection
	3 x M12
Axial shaft load	40 N
Radial shaft load	80 N
<b>Environmental conditions</b>	
Ambient temperature	-40...+80 °C
Vibration resistance (EN 60068-2-6)	100 m/s <sup>2</sup> , 55...2000 Hz
Shock resistance (EN 60068-2-27)	2500 m/s <sup>2</sup> , 6 ms
Protection class housing	IP67
Protection class shaft	IP67

## Accessories

RME-1

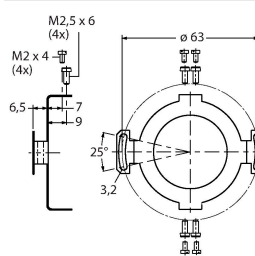
1544612



Stainless steel stator coupling for hollow shaft encoders, reference diameter, 65 mm, for highly dynamic, standard applications with axial and radial play

RME-2

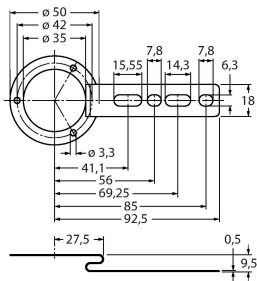
1544613



Stainless steel flex mount coupling for hollow shaft encoders, reference diameter 63 mm, for applications with high demands on accuracy

RME-4

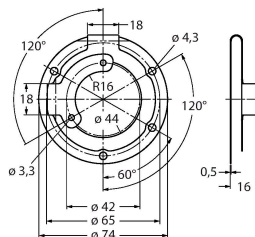
1544615



Stainless steel mounting panel for hollow shaft encoders, reference diameter 80...170 mm, for low dynamic applications with axial and radial play

RME-7

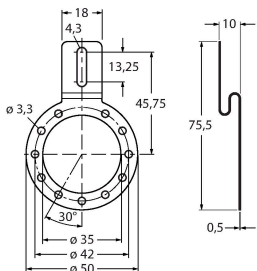
1544618



Stainless steel stator coupling for hollow shaft encoders, reference diameter 65 mm, for highly dynamic applications with axial and radial play

RME-8

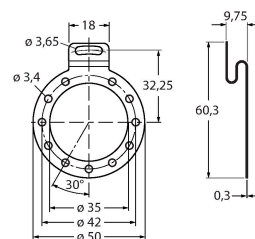
1544619



Stainless steel mounting panel for hollow shaft encoders, reference diameter 65...91.5 mm, for applications with axial and radial play at constant rotation speed

RME-9

1544620

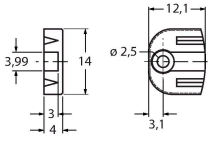


Stainless steel mounting panel for hollow shaft encoders, reference diameter 64.5 mm, for low dynamic applications with axial and radial play

## RME-13

1544624

Plastic mounting element for hollow shaft encoders, pitch diameter 42 mm, for applications with limited axial play, low dynamics and limited mounting space



## RME-14

1544625

Plastic mounting element for hollow shaft encoders, pitch diameters 44 mm, 60 mm, 63 mm, 65 mm, for low dynamic applications with high axial play.

