

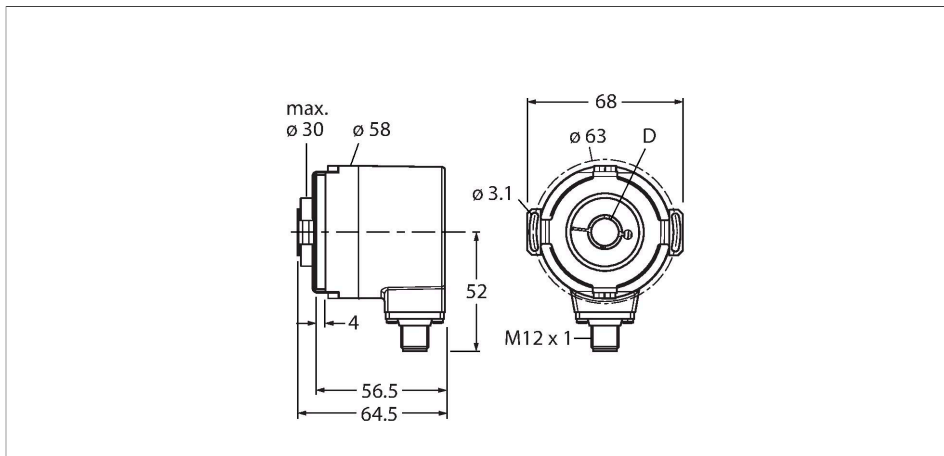
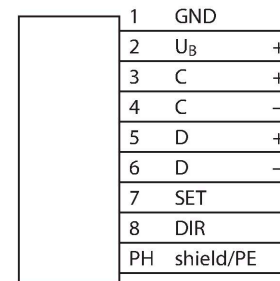
RM-35I12T-5C25B-H1181

Absolute Rotary Encoder - Multiturn Industrial Line

Features

- Flange with stator coupling, Ø 58 mm
- Hollow shaft, Ø 12 mm
- Optical measuring principle
- Shaft material: stainless steel
- Protection class IP65 on shaft side
- -40...+90 °C
- Max. 6000 rpm
- 10...30 VDC
- SSI, Binär
- M12 connector, 8-pin
- Singleturn, 13-bit resolution
- Multiturn, 12-bit resolution

Wiring diagram



Technical data

Type	RM-35I12T-5C25B-H1181
ID	1545463
Measuring principle	Optical
General data	
Max. rotational speed	9000 rpm
Moment of inertia of the rotor	7×10^{-6} kgm ²
Starting torque	< 0.03 Nm
Output type	Absolute multiturn
Resolution singleturn	13 Bit
Resolution multiturn	12 Bit
Electrical data	
Operating voltage U _B	10...30 VDC
No-load current	≤ 50 mA
Output current	≤ 20 mA
Short-circuit protection	yes
Wire break/reverse polarity protection	yes
Signal level high	typ. 3.8 V
Signal level low	typ. 1.3 V
Communication protocol	SSi
Output function	Binary coded
Mechanical data	
Flange type	Flange with stator coupling
Flange diameter	Ø 58 mm

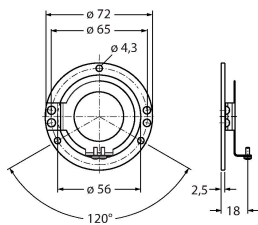
Technical data

Shaft Type	Blind hole shaft
Shaft diameter D (mm)	12
Shaft material	Stainless steel
Housing material	Die-cast zinc
Electrical connection	Connector, M12 × 1
	8-pin
Axial shaft load	40 N
Radial shaft load	80 N
Environmental conditions	
Ambient temperature	-40...+90 °C
Vibration resistance (EN 60068-2-6)	100 m/s ² , 55...2000 Hz
Shock resistance (EN 60068-2-27)	2500 m/s ² , 6 ms
Protection class housing	IP67
Protection class shaft	IP65

Accessories

RME-1

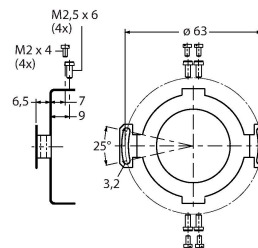
1544612



Stainless steel stator coupling for hollow shaft encoders, reference diameter, 65 mm, for highly dynamic, standard applications with axial and radial play

RME-2

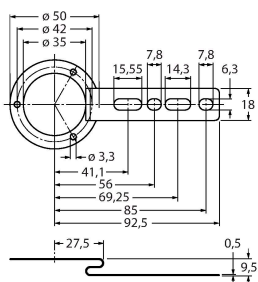
1544613



Stainless steel flex mount coupling for hollow shaft encoders, reference diameter 63 mm, for applications with high demands on accuracy

RME-4

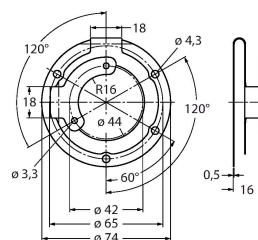
1544615



Stainless steel mounting panel for hollow shaft encoders, reference diameter 80...170 mm, for low dynamic applications with axial and radial play

RME-7

1544618

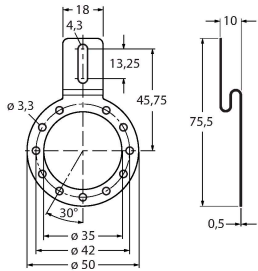


Stainless steel stator coupling for hollow shaft encoders, reference diameter 65 mm, for highly dynamic applications with axial and radial play

RME-8

1544619

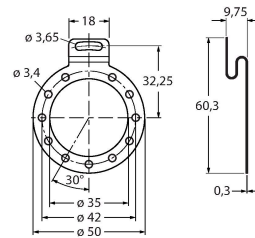
Stainless steel mounting panel for hollow shaft encoders, reference diameter 65...91.5 mm, for applications with axial and radial play at constant rotation speed



RME-9

1544620

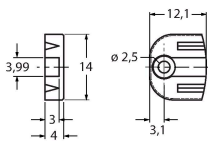
Stainless steel mounting panel for hollow shaft encoders, reference diameter 64.5 mm, for low dynamic applications with axial and radial play



RME-13

1544624

Plastic mounting element for hollow shaft encoders, pitch diameter 42 mm, for applications with limited axial play, low dynamics and limited mounting space



RME-14

1544625

Plastic mounting element for hollow shaft encoders, pitch diameters 44 mm, 60 mm, 63 mm, 65 mm, for low dynamic applications with high axial play.

