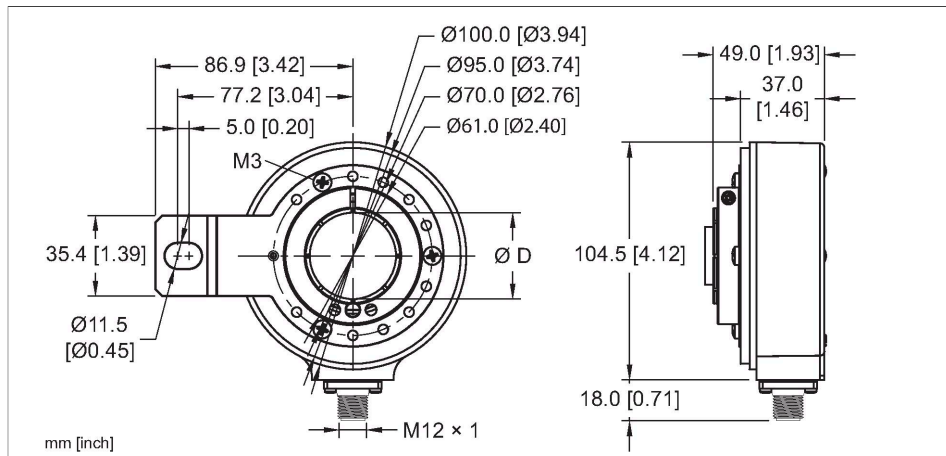


RI-43H38E2-2F2048-H1181/N33

Incremental Hollow Shaft Rotary Encoder

Industrial Line

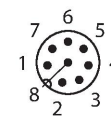
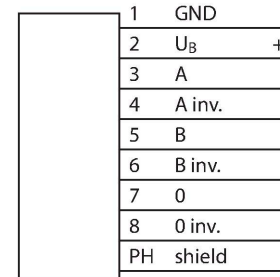


Technical data

Type	RI-43H38E2-2F2048-H1181/N33
ID	1545833
Measuring principle	Optical
General data	
Max. rotational speed	6000 rpm
Moment of inertia of the rotor	$220 \times 10^{-6} \text{ kgm}^2$
Starting torque	< 0.2 Nm
Output type	Incremental
Resolution incremental	2048 ppr
Electrical data	
Operating voltage U_b	5...30 VDC
No-load current	$\leq 100 \text{ mA}$
Output current	$\leq 20 \text{ mA}$
Short-circuit protection	yes
Wire break/reverse polarity protection	no
Pulse frequency max.	300 kHz
Signal level high	min. $U_b - 2 \text{ V}$
Signal level low	max. 0.5 V
Output function	8-wire, Push-Pull 7272, with inverted signals
Mechanical data	
Flange type	Flange with mounting element
Flange diameter	Ø 100 mm

Features

- Flange with 4 - 1/2" C-Face Tether, Ø 100 mm
- Hollow shaft, Ø 38 mm
- Optical measuring principle
- Shaft material, stainless steel
- Protection class IP65 on the shaft side
- -40 ... +80°C
- max. 6000 rev / min
- 5...30 VDC
- Male connector, M12 x 1 , 8-pole
- Push-pull 7272, with inverted signals
- (N33) A leads B, Z gated with B-, Z is 180° wide
- Pulse frequency max. 300 kHz
- 2048 pulses per revolution



Technical data

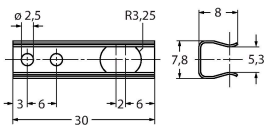
Shaft Type	Hollow shaft
Shaft diameter D (mm)	38
Shaft material	Stainless steel
Housing material	Die-cast zinc
Electrical connection	Connector, M12 × 1
	M12, 8-pin
Axial shaft load	100 N
Radial shaft load	200 N
Environmental conditions	
Ambient temperature	-40...+80 °C
Vibration resistance (EN 60068-2-6)	10 g (100 m/s ²), 10...2000 Hz
Shock resistance (EN 60068-2-27)	200 g (1000 m/s ²), 6 ms
Protection class	IP65
Protection class shaft	IP65
Included in delivery	4 - 1/2" C-Face tether

Accessories

RA-43-S4

1545911

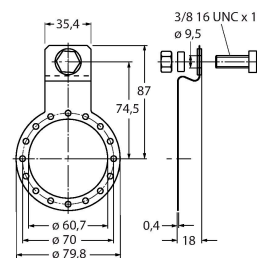
Stainless steel long anti-rotation spring 110 mm reference diameter



RA-43-E2

1545912

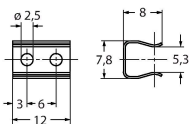
Stainless steel 4 1/2" C-face tether 149 mm reference diameter



RA-43-S5

1545910

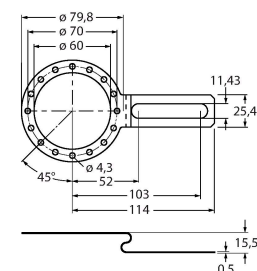
Stainless steel short anti-rotation spring 76 mm reference diameter



RA-43-S8

1545909

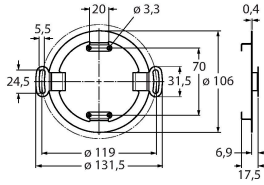
Stainless steel long tether arm 104 - 206 mm reference diameter



RA-43-E

1545946

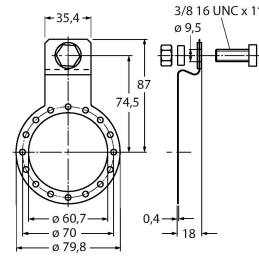
Stainless steel slotted fexmount
119mm reference diameter



RME-5

1544616

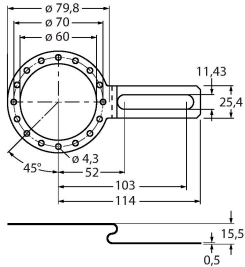
Stainless steel mounting panel for hollow shaft encoders, reference diameter 149 mm, for applications with axial play



RME-6

1544617

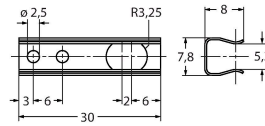
Stainless steel mounting panel for hollow shaft encoders, reference diameter 104...206 mm, for applications with fixing points on adjustable reference diameter



RME-10

1544621

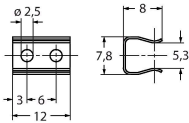
Stainless steel mounting element for hollow shaft encoders, pitch diameter 110 mm, for applications with high axial play



RME-11

1544622

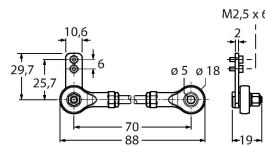
Stainless steel mounting element for hollow shaft encoders, pitch diameter 76 mm, for applications with limited mounting space



RME-15

1544626

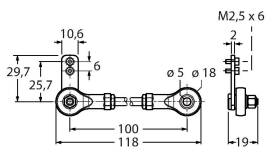
Metal arm bracket, for hollow shaft encoders, length 70 mm; for applications with little axial and radial play; flexibly adjustable



RME-16

1544627

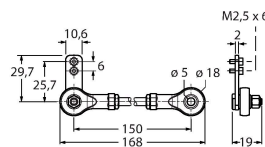
Metal arm bracket, for hollow shaft encoders, length 100 mm; for applications with little axial and radial play; flexibly adjustable



RME-17

1544628

Metal arm bracket, for hollow shaft encoders, length 150 mm; for applications with little axial and radial play; flexibly adjustable



RME-18

1544629

Stainless steel stator coupling for hollow shaft encoders, reference diameter 119 mm, for highly dynamic applications with axial and radial play

