

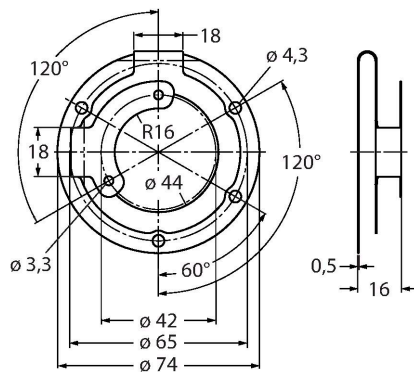
RA-E1

Accessories – Flex mount

For Hollow Shaft Encoders RI12, RS-31, RS-33, RM-35, RM-36

Features

- Flex mount, reference diameter 65 mm
- Laterally mounted at the encoder flange
- For highly dynamic, standard applications with axial and radial play
- Material: stainless steel
- Kit includes: 2 screws



Technical data

Type	RA-E1
ID	1545953
Housing material	Stainless steel