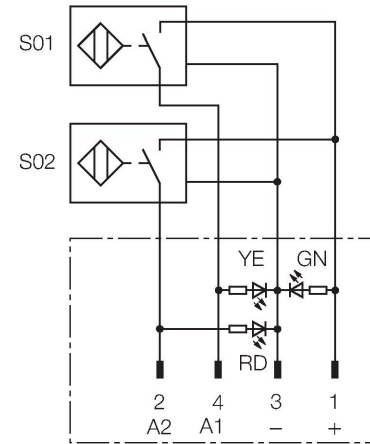


# NI2-K08Q-0.095/0.11-BDS-2AP6X3-H1141/S34 Inductive Sensor – Monitoring Kit for Power Clamps

## Features

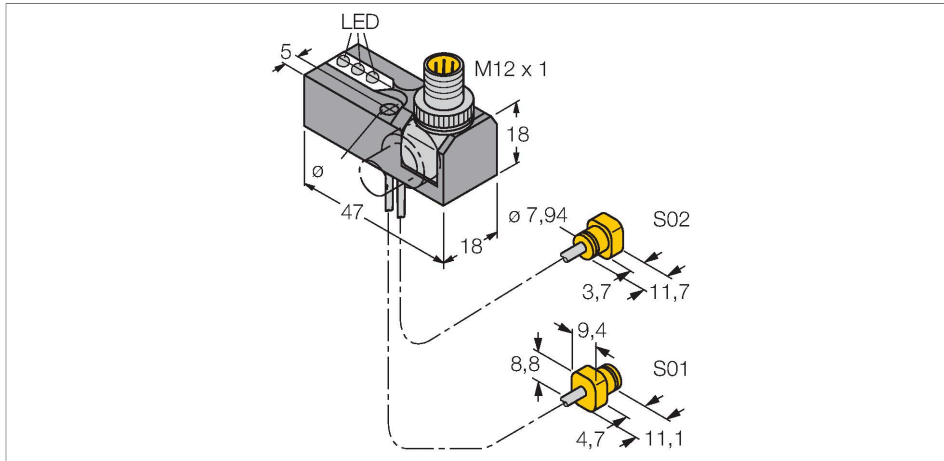
- BDS power block with two connected sensors and LEDs
- Robust rotatable connector 0°, 45° and 90°, for optimal cable routing
- Plastic, Trogamid
- Resistant to magnetic fields (weld-resistant), for DC and AC fields up to 100 mT
- 2 x NO contact, PNP output
- DC 4-wire, 10...30 VDC

## Wiring diagram



## Functional principle

TURCK offers special monitoring kits, consisting of two miniature sensors, as a convenient solution for "Open/Closed" detection on pneumatic power clamps. This product line provides almost unlimited combination possibilities, comprising four different power blocks and over 40 different modular sensor types.



## Technical data

Type	NI2-K08Q-0.095/0.11-BDS-2AP6X3-H1141/S34
ID	1650124
Special version	S34 Corresponds to: Weld-field immune proximity sensors
<b>General data</b>	
Rated switching distance	1.2 mm
	For S01 sensor, 2 mm for S02 sensor
Mounting conditions	Non-flush
Secured operating distance	$\leq (0.81 \times S_n) \text{ mm}$
Correction factors	St37 = 1; Al = 0.3; stainless steel = 0.7; Ms = 0.4
Repeat accuracy	$\leq 2 \text{ \% of full scale}$
Temperature drift	$\leq \pm 10 \text{ \%}$
Hysteresis	3...15 %
<b>Electrical data</b>	
Operating voltage $U_s$	10...30 VDC
Ripple $U_{ss}$	$\leq 10 \text{ \% } U_{smax}$
DC rated operating current $I_o$	$\leq 200 \text{ mA}$
No-load current	$\leq 15 \text{ mA}$
Residual current	$\leq 0.1 \text{ mA}$
Isolation test voltage	0.5 kV
Short-circuit protection	yes/Thermal
Voltage drop at $I_o$	$\leq 1.8 \text{ V}$
Wire break/reverse polarity protection	Complete

## Technical data

Output function	4-wire, NO contact, PNP
Smallest operating current	$\geq 1$ mA
Switching frequency	0.03 kHz
<b>Mechanical data</b>	
Design	Monitoring kit for power clamps, K08Q
Dimensions	47 x 18 x 18 mm
Housing material	Plastic, Trogamit
Active area material	Plastic, PA12-GF20
Electrical connection	Connector, M12 x 1
Cable quality	Ø 2 mm, Gray, Lif9Y-11Y, PUR, 0.095 m, 0.11 m
Core cross-section	3 x 0.08 mm <sup>2</sup>
Litz wire	40 x 0.05 mm
<b>Environmental conditions</b>	
Ambient temperature	-25...+70 °C
Vibration resistance	55 Hz (1 mm)
Shock resistance	30 g (11 ms)
Protection class	IP67
MTTF	2283 years acc. to SN 29500 (Ed. 99) 40 °C
Power-on indication	LED, Green
Switching state	2 x LEDs, Yellow/red

## Mounting instructions

### Mounting instructions/Description




The sensor should only be mounted in the correspondent retainer.

The sensor is adjusted to the mounting characteristics of the retainer. Deviant mounting may cause unpredictable performance of the sensor.

Flush mounting without leaving a gap may lead to uncontrolled switching of the sensor.

Wiring accessories

Dimension drawing	Type	ID	
	RKC4.4T-2/TEL	6625013	Connection cable, M12 female connector, straight, 4-pin, cable length: 2 m, jacket material: PVC, black; cULus approval