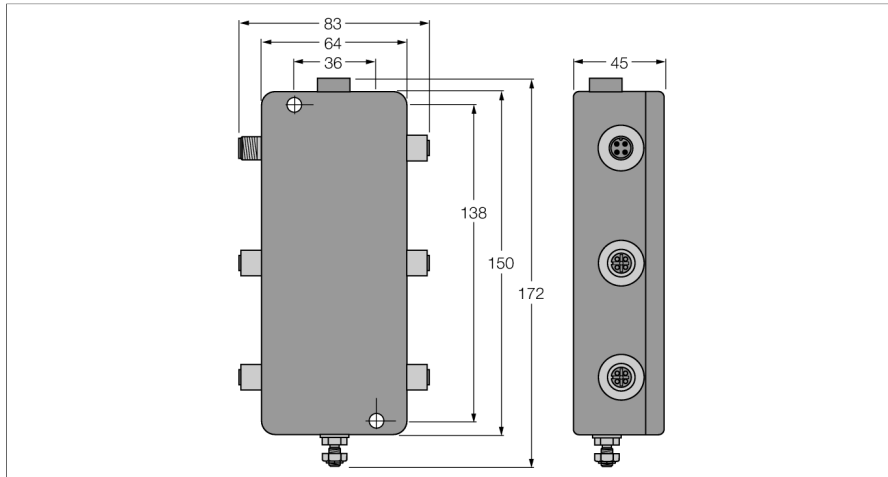


PROFIBUS-PA

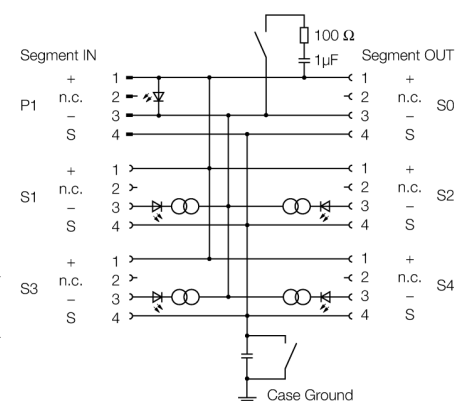
IP67 junction box, 4-channel

JBBS-48SC-E413/EX



- Junction box for wall mounting with stainless steel M12 flange connections
- Short-circuit protection per drop line/spur
- Integrated terminating resistor (activatable)
- Cable shielding: Capacitive or direct connection to housing potential selectable via switch
- Isolated support terminal for optional protective conductor incorporated in cable
- Powder-coated die-cast aluminium housing
- Pressure compensation element protects against condensation
- Connection of the housing potential via M5 x 1 bolt
- Entity and FISCO compliant according to IEC 60079-11

ID	6611409
Textmodule for individual datasheets!!! Don't translate!!!	The 4-channel Ex junction box JBBS-48SC-E413/EX is designed for PROFIBUS-PA systems.
Textmodule for individual datasheets !!! Don't translate!!!	The junction box is equipped with an adjustable short-circuit current limiter. As maximum current limit, the following values can be selected together for all channels via a rotary coding switch: 30, 35, 45 and 60 mA.
Textmodule for individual datasheets!!! Don't translate!!!	The housing is made of powder-coated die-cast aluminium and is IP67 rated.
Textmodule for individual datasheets!!! Don't translate!!!	The junction box is equipped with an activatable terminating resistor for the bus. The switch is integrated in the housing on the board.
Textmodule for individual datasheets!!! Don't translate!!!	Condensation in the housing is prevented by a breather.
Textmodule for individual datasheets!!! Don't translate!!!	Shielding and housing can be connected directly via a second switch which is also located on the board.
Textmodule for individual datasheets !!! Don't translate!!!	Note: It must be ensured that there is sufficient equipotential bonding in the system. The device is connected to the equipotential bonding via the housing's M5 x 1 grounding bolt.



Fieldbus standard	IEC 61158-2
Operating voltage	12...32 VDC
Current self-consumption	≤ 7 mA
Voltage drop	0.3V
Short-circuit protection	≤ 30, ≤ 35, ≤ 45, ≤ 60 mA
Displays/Operating elements	
Operational readiness	1 x green
Short-circuit message	4 x red

	II 2 (2D) G
Ex approval acc. to conformity certificate	PTB 03 ATEX 2236
Device designation	Ex II 2 G Ex ib IIC T4 Gb
Device marking	Ex II 2 (1) G Ex ia [ia Ga] IIC T4 Gb
	Ex II 2 (1D) G Ex ia [ia IIIC Da] IIB T4 Gb
	Ex II 2 (2D) G Ex ib [ib IIIC Db] IIB T4 Gb
	FISCO / Entity field device
Entity Parameter	
Max. output voltage U_o	≤ 24
Max. output current I_o	≤ 250
Max. output power P_o	≤ 2560
Max. input voltage U_i	≤ 24
Max. input current I_i	≤ 250
Max. input power P_i	≤ 2560
FISCO parameter according to IEC 60079-11	
Max. output voltage U_o	≤ 17.5
Max. output current I_o	≤ 380
Max. output power P_o	≤ 5320
Max. input voltage U_i	≤ 17.5
Max. input current I_i	≤ 380
Max. input power P_i	≤ 5320
External inductance/capacitance L/C,	trunk (in/out): negligible / ≤ 5.00 nF per field circuit: negligible / ≤ 0.82 nF Σ Field circuits: negligible / ≤ 5.00 nF
Electrical connection	M12 receptacle
Segment IN	1 x M12 - male
Segment OUT	1 x M12 - female
Spur line	4 x M12 - female
Earthing bolt	M5 x 1
Protection class	IP67
MTTF	117 acc. to SN 29500 (Ed. 99) 40 °C
Ambient temperature	-30...+70 °C
Housing material	Powder-coated die-cast aluminium, Black/yellow
Dimensions	64 x 150 x 45 mm
Connection mode	Wall mounting