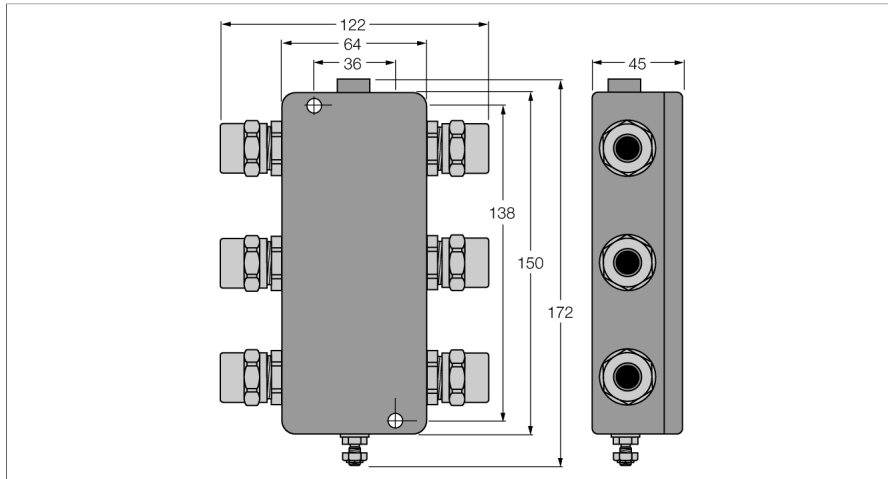
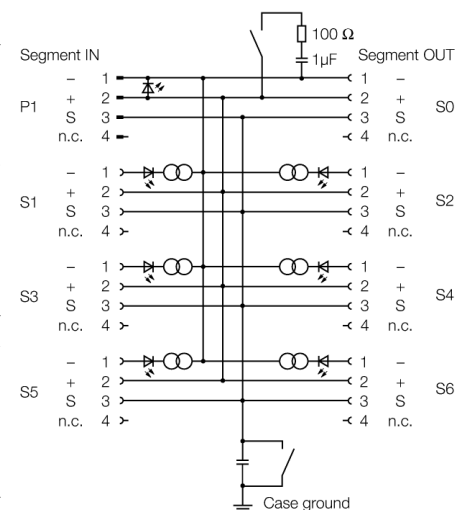
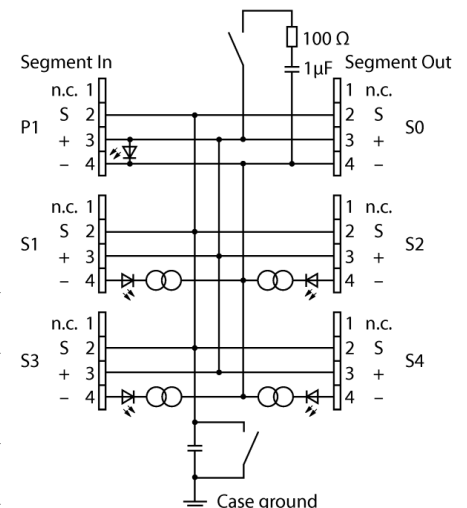


# FOUNDATION fieldbus IP67 junction box, 4-channel JBBS-49SC-T415B/EX



- Junction box for wall mounting with PVC cable glands M20 x 1.5
- Short-circuit protection per drop line/spur
- Integrated terminating resistor (activatable)
- Cable shielding: Capacitive or direct connection to housing potential selectable via switch
- Isolated support terminal for optional protective conductor incorporated in cable
- Powder-coated die-cast aluminium housing
- Pressure compensation element protects against condensation
- Connection of the housing potential via M5 x 1 bolt
- Entity and FISCO compliant according to IEC 60079-11

ID	6611441
Textmodule for individual datasheets!!! Don't translate!!!	The 4-channel Ex junction box JBBS-49SC-T415B/EX is designed for FOUNDATION™ fieldbus systems.
Textmodule for individual datasheets !!! Don't translate!!!	The junction box is equipped with an adjustable short-circuit current limiter. As maximum current limit, the following values can be selected together for all channels via a rotary coding switch: 30, 35, 45 and 60 mA.
Textmodule for individual datasheets!!! Don't translate!!!	The housing is made of powder-coated die-cast aluminium and is IP67 rated.
Textmodule for individual datasheets!!! Don't translate!!!	The junction box is equipped with an activatable terminating resistor for the bus. The switch is integrated in the housing on the board.
Textmodule for individual datasheets!!! Don't translate!!!	Condensation in the housing is prevented by a breather.
Textmodule for individual datasheets!!! Don't translate!!!	Shielding and housing can be connected directly via a second switch which is also located on the board.
Textmodule for individual datasheets !!! Don't translate!!!	<b>Note:</b> It must be ensured that there is sufficient equipotential bonding in the system. The device is connected to the equipotential bonding via the housing's M5 x 1 grounding bolt.
Fieldbus standard	IEC 61158-2
Operating voltage	12...32 VDC
Current self-consumption	≤ 7 mA
Voltage drop	0.3V
Short-circuit protection	≤ 30, ≤ 35, ≤ 45, ≤ 60 mA
Displays/Operating elements	
Operational readiness	1 x green
Short-circuit message	4 x red



	II 2 (2D) G
Ex approval acc. to conformity certificate	PTB 03 ATEX 2236
Device designation	Ex II 2 G Ex ib IIC T4 Gb
Device marking	Ex II 2 (1) G Ex ia [ia Ga] IIC T4 Gb
	Ex II 2 (1D) G Ex ia [ia IIIC Da] IIB T4 Gb
	Ex II 2 (2D) G Ex ib [ib IIIC Db] IIB T4 Gb
	FISCO / Entity field device
Entity Parameter	
Max. output voltage $U_o$	$\leq 24$
Max. output current $I_o$	$\leq 250$
Max. output power $P_o$	$\leq 2560$
Max. input voltage $U_i$	$\leq 24$
Max. input current $I_i$	$\leq 250$
Max. input power $P_i$	$\leq 2560$
FISCO parameter according to IEC 60079-11	
Max. output voltage $U_o$	$\leq 17.5$
Max. output current $I_o$	$\leq 380$
Max. output power $P_o$	$\leq 5320$
Max. input voltage $U_i$	$\leq 17.5$
Max. input current $I_i$	$\leq 380$
Max. input power $P_i$	$\leq 5320$
External inductance/capacitance L/C,	trunk (in/out): negligible / $\leq 5.00$ nF per field circuit: negligible / $\leq 0.82$ nF $\Sigma$ Field circuits: negligible / $\leq 5.00$ nF
Electrical connection	
Segment IN	1 x M20 x 1.5 (Ø 7...13 mm)
Segment OUT	1 x M20 x 1.5 (Ø 7...13 mm)
Spur line	4 x M20 x 1.5 (Ø 7...13 mm)
Terminal cross-section	0.2...2.5 mm <sup>2</sup> (AWG: 24...14)
Earthing bolt	M5 x 1
Protection class	
MTTF	117 acc. to SN 29500 (Ed. 99) 40 °C
Ambient temperature	-40...+70 °C
Housing material	Powder-coated die-cast aluminium, Black/yellow
Dimensions	64 x 150 x 45 mm
Connection mode	Wall mounting