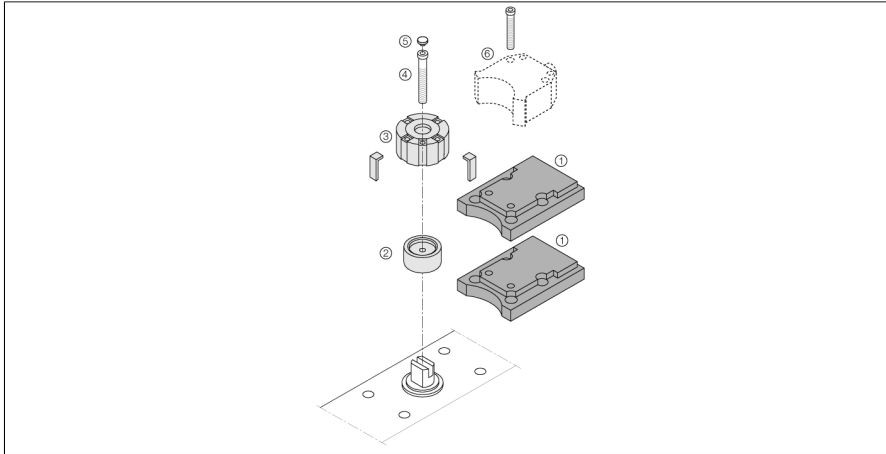


Mounting Accessories

Actuation kit (puck)

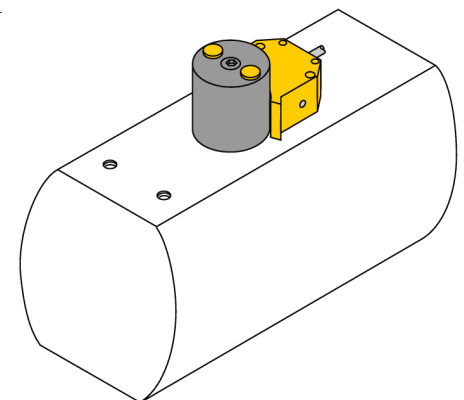
BTS-DS20-RO1



- End position damped
- damping and position display via puck insertion parts
- Hole pattern on flange surface: 80 x 30 mm and 130 x 30 mm
- Connection shaft (shaft extension) height: 10 mm/Ø: max. 30 mm
- With two universal intermediate plates (each 10 mm high) for use with shaft extension heights of 20 or 30 mm.

General description

Dual sensors are especially designed for position detection in rotary actuators. They combine the reliability of non-contact inductive sensors with the flexibility of a modular housing system. A broad range of practice-oriented accessories ensure optimal adaption to your system.



Type	BTS-DS20-RO1
ID	6900174
Design	Accessories for dual sensors, Ni4-DS20-...
Housing material	Plastic, POM