

# Mounting Accessories

## Optical Indicator Dome

### For DSU35 Dual Sensors

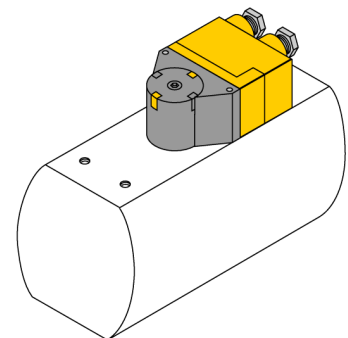
### BTS-DSU35-DOME RD/GN



- Optical indicator dome made of plastic
- For toolless mounting on actuators, end position damped
- Red/green
- Order BTS-DSU35-DOME COVER separately as a cover

#### General description

Dual sensors are especially designed for position detection in rotary actuators. They combine the reliability of non-contact inductive sensors with the flexibility of a modular housing system. A broad range of practice-oriented accessories ensure optimal adaption to your system.



Type	BTS-DSU35-DOME RD/GN
ID	6901073
Design	Accessories for dual sensors, Ni4-DSU35...
Housing material	Plastic, ABS
Included in delivery	1 x Dome red/green (BTS-DSU35-EBE3 actuator to be ordered separately)