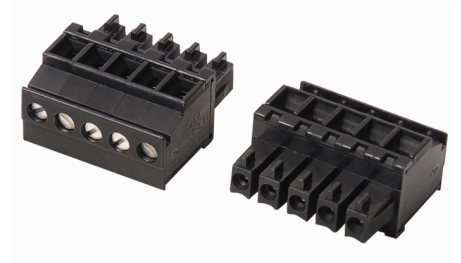
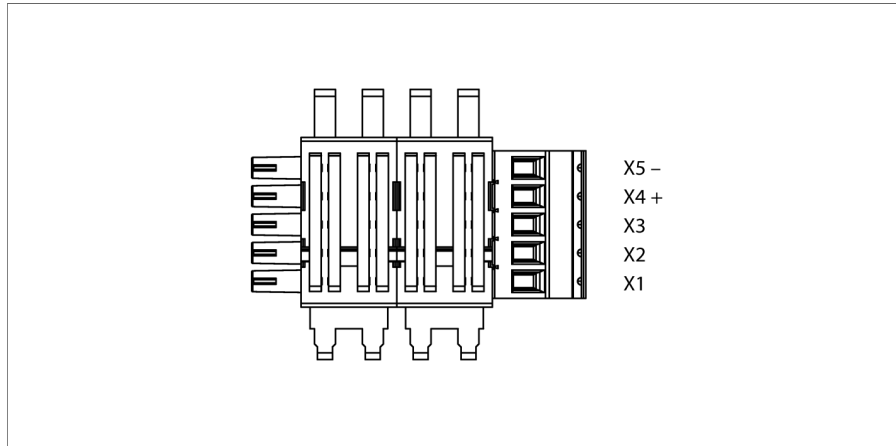


## Accessories

### Power Bridge Connection Terminal

#### MCVR 1.5/ 5-ST-3.81 BK



- Power-Bridge terminal
- Cable entry from above
- Plug-in direction vertical to the conductor axis
- Screw connection
- cULus Recognized
- 5-pin
- Pin

**Dimensions**

Type	MCVR 1.5/ 5-ST-3.81 BK
ID	7580955
Data sheet version	1.0
Nominal voltage	300 V
Nominal current	8 A
Flammability class acc. to UL 94	V-0
Dimensions	10.4 x 19.84 x 19.1 mm
Weight	4 g
Terminal cross-section	0.14...1.5 mm <sup>2</sup>
Tightening torque	0.25 Nm

