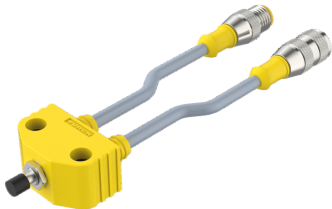
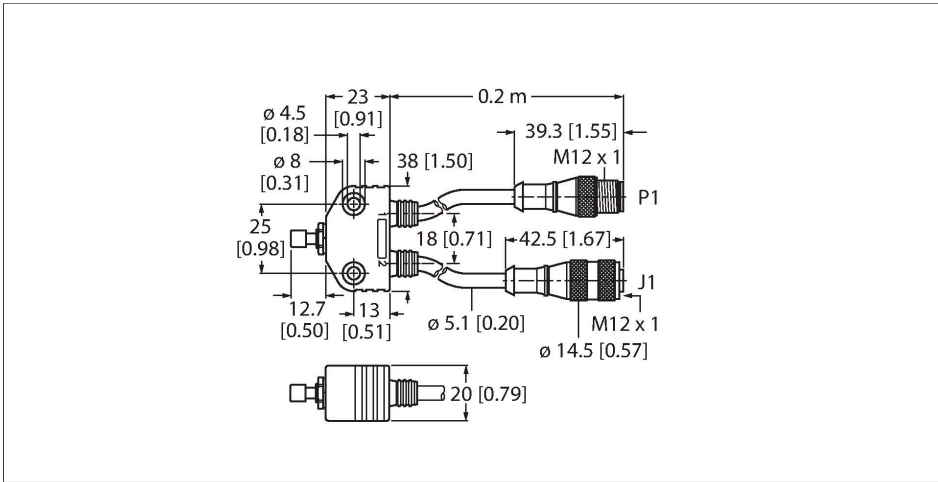


# VB2-SP2

## Actuator and Sensor Accessory – Teach Adapter



### Technische Daten

Type	VB2-SP2
ID	U0886-29
Connector A	M12 × 1
Length (L)	0.2 m
Cable jacket	Gray
Operating voltage U <sub>b</sub>	125 VDC
Note	- We reserve the right to make technical alterations without prior notice.

### Features

- M12 eurofast

### Wiring Diagram

### Functional principle

The teach adapter is connected between the sensor and the connection cable. Upon pressing the push button, conductor 2 (WH) and conductor 3 (BU) are short-circuited. The connected sensor is configured according to the pulse sequence and pulse duration.