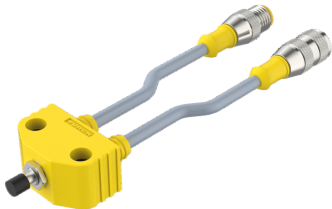
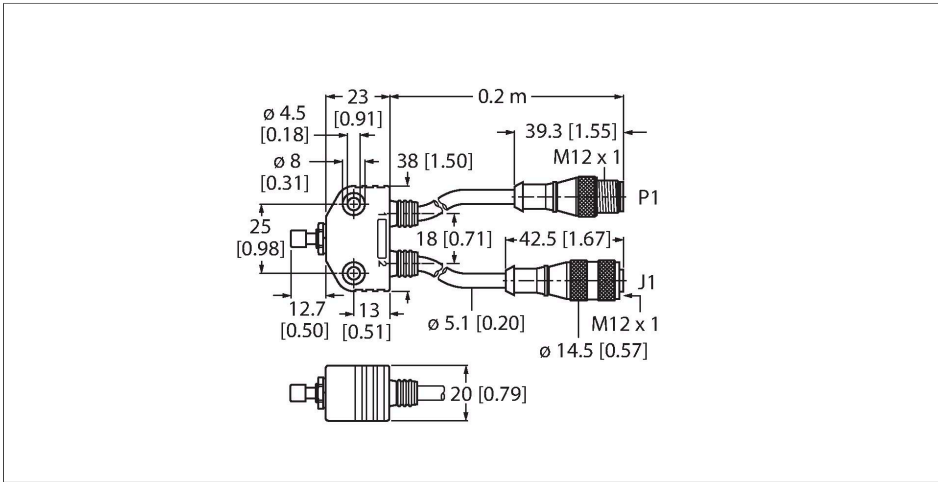


VB2-SP3

Actuator and Sensor Accessory – Teach Adapter



Technische Daten

Type	VB2-SP3
ID	U2-12907
Connector A	M12 × 1
Length (L)	0.2 m
Cable jacket	Gray
Operating voltage U _b	125 VDC
Note	- We reserve the right to make technical alterations without prior notice.

Features

- M12 eurofast

Wiring Diagram

Functional principle

The teach adapter is connected between the sensor and the connection cable. Upon pressing the push button, conductor 5 (GY) and conductor 3 (BU) are short-circuited. The connected sensor is configured according to the pulse sequence and pulse duration.