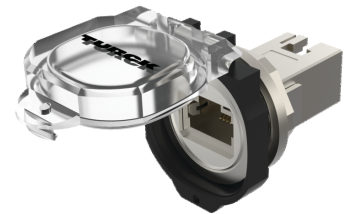
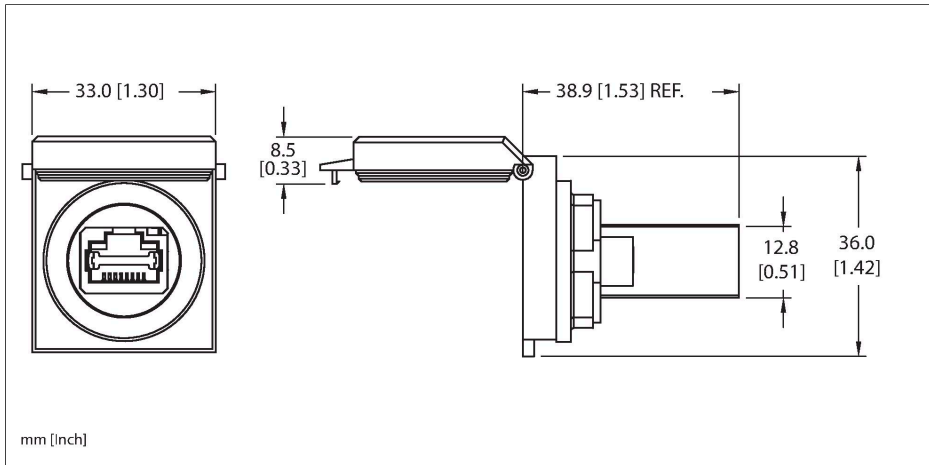


RJ45 PANEL MOUNT W IP67 CAP

Panel Feed-through Receptacle – Female Receptacle to Female Receptacle

Rear Mount



Technische Daten

Type	RJ45 PANEL MOUNT W IP67 CAP
ID	U2-22253
Connector A	Female, RJ45, Threaded
Number of contacts	8
Contact carriers	Plastic, PA, Black
Housing material/finish	Zinc, Nickel-plated
Mechanical life	> 750 Mating cycles
Protection class (When coupled)	IP20
Connector B	Female, RJ45
Contact carriers	Plastic, PA, Black
Housing material/finish	Zinc, Nickel-plated
Cable data	
Fieldbus	Ethernet
Electrical properties at +20 °C	
Rated voltage	48 V
Current	1.5 A
Mechanical and chemical properties	
Ambient temperature range (static)	-25...+75 °C
Approvals	RoHS
Note	

- We reserve the right to make technical alterations without prior notice.

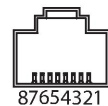
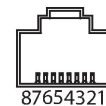
Features

- RJ45, Female, Straight, 8-pin, Shielded
- RJ45, Female, Straight, 8-pin, Shielded

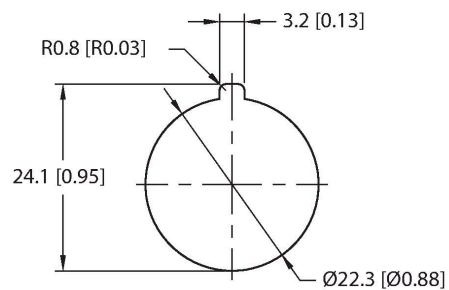
Contact assignment

Connector A

Connector B



Mounting hole - Through



mm [Inch]

Rear-mounted

