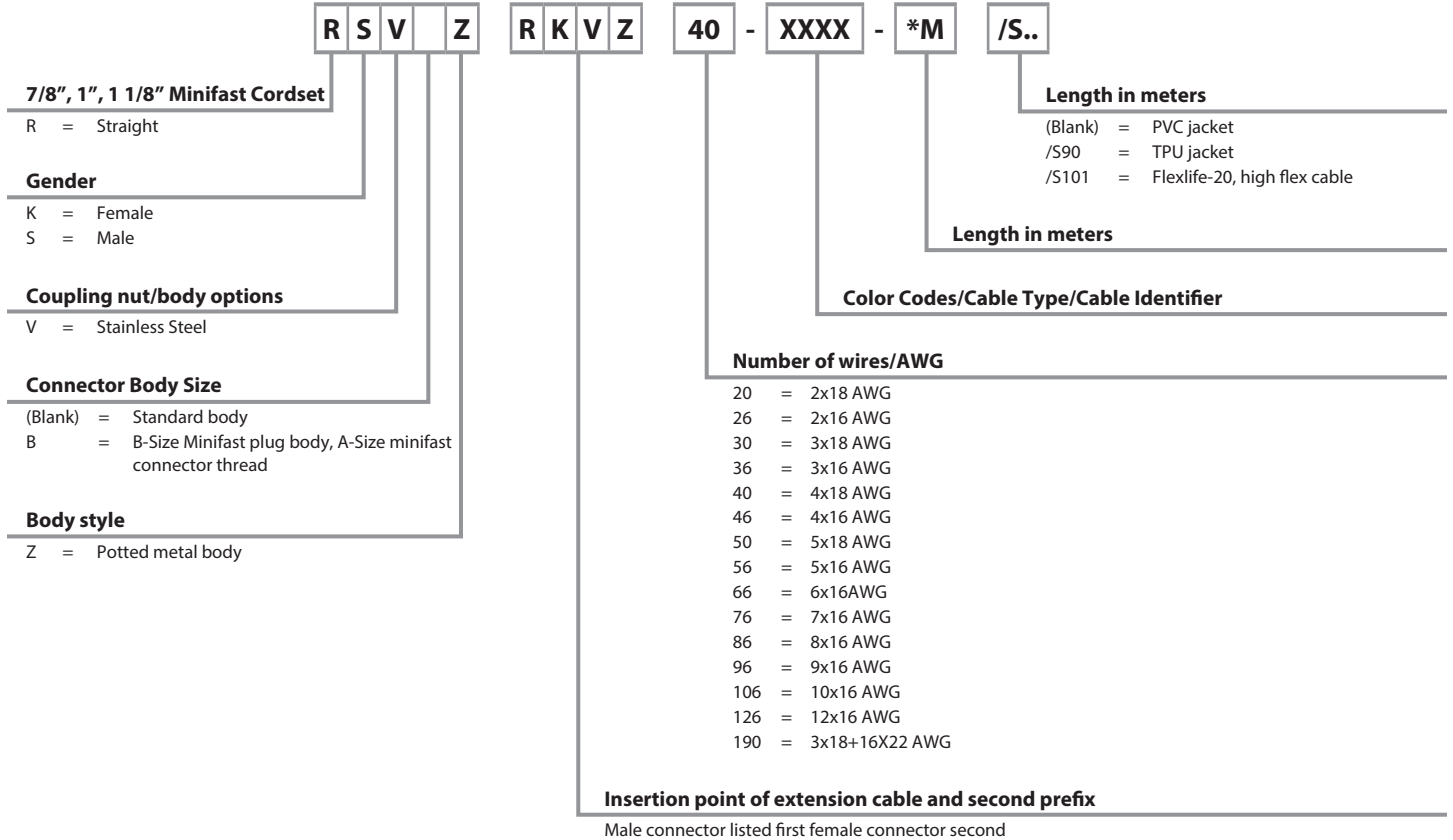


Connectivity

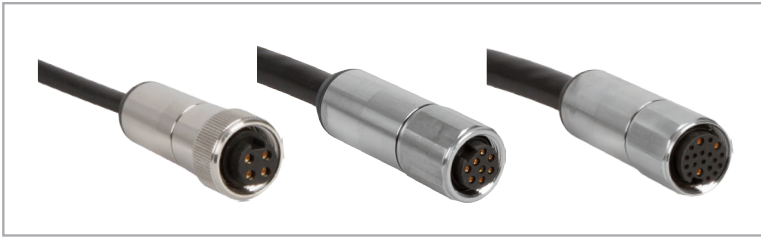
Minifast HD (Heavy Duty) Cordsets Part Number Key

Part Number Keys are to assist in IDENTIFICATION ONLY. Consult factory for catalog items not identified.



Connectivity

Minifast HD (Heavy Duty) Cordsets



Product Highlights

Electrical connection conforms to ANSI B93.55M-1981 & SAE H1738-2
 316 stainless steel body and coupling nut
 NEMA 1,3,4,6P and IEC IP67, IP68

Cable Features

Cable Jacket Material: PVC
 UL Approvals: STOOW or ITC
 Cable Temperature Rating: -40 to +105 °C

Part Number	Application	Image Reference	Pinout	Cable Specifications	Electrical Ratings	Pinout Color
RKVZ 26-0561-*M	2-wire, 16 AWG, female	A	1	2x16 AWG	10 amps, 600 volts	1.WH 2.BK
RSVZ 26-0561-*M	2-wire, 16 AWG, male	B	2	9.6 mm OD		
RSVZ RKVZ 26-0561-*M	2-wire, 16 AWG, female to male extension	A, B	1, 2	STOOW Approval Cable #RF50561		
RKVZ 20-0511-*M	2-wire, 18 AWG, female	A	1	2x18 AWG	9 amps, 600 volts	1.BN 2.BU
RSVZ 20-0511-*M	2-wire, 18 AWG, male	B	2	6.2 mm OD		
RSVZ RKVZ 20-0511-*M	2-wire, 18 AWG, female to male extension	A, B	1, 2	ITC Approval Cable #RF50511		
RKVZ 36-0536-*M	3-wire, 16 AWG, female	A	3	3x16 AWG	10 amps, 600 volts	1.GN 2.BK 3.WH
RSVZ 36-0536-*M	3-wire, 16 AWG, male	B	4	10.0 mm OD		
RSVZ RKVZ 36-0536-*M	3-wire, 16 AWG, female to male extension	A, B	3, 4	STOOW Approval Cable #RF50536		
RKVZ 30-0880-*M	3-wire, 18 AWG, female	A	3	3x18 AWG	9 amps, 600 volts	1.GN/YE 2.BN 3.BU
RSVZ 30-0880-*M	3-wire, 18 AWG, male	B	4	6.2 mm OD		
RSVZ RKVZ 30-0880-*M	3-wire, 18 AWG, female to male extension	A, B	3, 4	ITC Approval Cable #RF50880		
RKVZ 46-0538-*M	4-wire, 16 AWG, female	A	5	4x16 AWG	10 amps, 600 volts	1.BK 2.WH 3.RD 4.GN
RSVZ 46-0538-*M	4-wire, 16 AWG, male	B	6	10.8 mm OD		
RSVZ RKVZ 46-0538-*M	4-wire, 16 AWG, female to male extension	A, B	5, 6	STOOW Approval Cable #RF50538		
RKVZ 40-0548-*M	4-wire, 18 AWG, female	A	7	4x18 AWG	9 amps, 600 volts	1.BN 2.WH 3.BU 4.BK
RSVZ 40-0548-*M	4-wire, 18 AWG, male	B	8	6.7 mm OD		
RSVZ RKVZ 40-0548-*M	4-wire, 18 AWG, female to male extension	A, B	7, 8	ITC Approval Cable #RF50548		
RKVZ 56-0539-*M	5-wire, 16 AWG, female	A	9	5x16 AWG	10 amps, 600 volts	1.WH 2.RD 3.GN 4.OR 5.BK
RSVZ 56-0539-*M	5-wire, 16 AWG, male	B	10	12.7 mm OD		
RSVZ RKVZ 56-0539-*M	5-wire, 16 AWG, female to male extension	A, B	9, 10	STOOW Approval Cable #RF50539		
RKVZ 50-0549-*M	5-wire, 18 AWG, female	A	9	5x18 AWG	9 amps, 600 volts	1.BK 2.BU 3.GN/YE 4.BN 5.WH
RSVZ 50-0549-*M	5-wire, 18 AWG, male	B	10	7.6 mm OD		
RSVZ RKVZ 50-0549-*M	5-wire, 18 AWG, female to male extension	A, B	9, 10	ITC Approval Cable #RF50549		
RKVZ 66-0565-*M	6-wire, 16 AWG, female	A	11	6x16 AWG	8 amps, 600 volts	1.WH 2.RD 3.GN 4.OR 5.BK 6.BU
RSVZ 66-0565-*M	6-wire, 16 AWG, male	B	12	13.6 mm OD		
RSVZ RKVZ 66-0565-*M	6-wire, 16 AWG, female to male extension	A, B	11, 12	STOOW Approval Cable #RF50565		
RKVZ 76-1031-*M	7-wire, 16 AWG, female	C	13	7x16 AWG	8 amps, 600 volts	1.WH/BK 2.BK 3.WH 4.RD 5.OR 6.BU 7.GN
RSVZ 76-1031-*M	7-wire, 16 AWG, male	D	14	9.6 mm OD		
RSVZ RKVZ 76-1031-*M	7-wire, 16 AWG, female to male extension	C, D	13, 14	ITC Approval Cable #RF51031		

We reserve the right to make technical alterations without prior notice.

* Length in meters. Standard cable lengths are 2, 4, 6, 8 and 10 meters. Consult factory for other lengths.
 See Turck control drawing Ni-2.422 for guidance on installation in hazardous locations.
 Use with Lockfast guards for approved installation in hazardous locations.

Connectivity

Minifast HD (Heavy Duty) Cordsets (continued)

Part Number	Application	Image Reference	Pinout	Cable Specifications	Electrical Ratings	Pinout Color
RKVZ 86-1032-*M	8-wire, 16 AWG, female	C	15	8x16 AWG	8 amps, 600 volts	1.OR 5.WH
RSVZ 86-1032-*M	8-wire, 16 AWG, male	D	16	10.0 mm OD ITC Approval		2.BU 6.RD
RSVZ RKVZ 86-1032-*M	8-wire, 16 AWG, female to male extension	C, D	15, 16	Cable #RF51032		3.WH/BK 7.GN 4.BK 8.RD/BK
RKVZ 96-1033-*M	9-wire, 16 AWG, female	E	17	9x16 AWG	7 amps, 600 volts	1.OR 6.RD
RSVZ 96-1033-*M	9-wire, 16 AWG, male	F	18	11.3 mm OD ITC Approval		2.BU 7.GN
RSVZ RKVZ 96-1033-*M	9-wire, 16 AWG, female to male extension	E, F	17, 18	Cable #RF51033		3.RD/BK 8.WH/BK 4.GN/BK 9.BK 5.WH
RKVZ 106-1034-*M	10-wire, 16 AWG, female	E	19	10x16 AWG 12.0 mm OD ITC Approval Cable #RF51034	7 amps, 600 volts	1.OR 6.OR/BK
RSVZ 106-1034-*M	10-wire, 16 AWG, male	F	20			2.BU 7.RD
RSVZ RKVZ 106-1034-*M	10-wire, 16 AWG, female to male extension	E, F	19, 20			3.WH/BK 8.GN 4.RD/BK 9.BK 5.GN/BK 10.WH
RKVZ 126-1035-*M	12-wire, 16 AWG, female	E	21	12x16 AWG 12.5 mm OD ITC Approval Cable #RF51035	7 amps, 600 volts	1.OR 7.BU/BK
RSVZ 126-1035-*M	12-wire, 16 AWG, male	F	22			2.BU 8.BK/WH
RSVZ RKVZ 126-1035-*M	12-wire, 16 AWG, female to male extension	E, F	21, 22			3.WH/BK 9.GN 4.RD/BK 10.RD 5.GN/BK 11.WH 6.OR/BK 12.BK
RKVZ 190-0620-*M	19-wire, 3x18+16x22 AWG, female	E	23	3x18+16x22 AWG 10.0 mm OD ITC Approval Cable #RF50620	4 amps (pins 5, 7, 12), 2 amps (all others), 300 volts	1.VT 11.BK
RSVZ 190-0620-*M	19-wire, 3x18+16x22 AWG, male	F	24			2.RD 12.GN/YE
RSVZ RKVZ 190-0620-*M	19-wire, 3x18+16x22 AWG, female to male extension	E, F	23, 24			3.GY 13.YE/BN 4.RD/BU 14.BN/GN 5.BU 15.WH 6.GN 16.YE 7.BN 17.PK 8.WH/GN 18.GY/BN 9.WH/YE 19.GY/PK 10.WH/GY

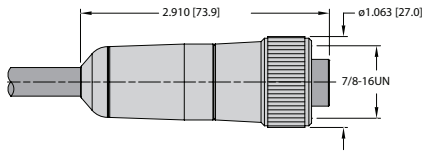
We reserve the right to make technical alterations without prior notice.

Connectivity

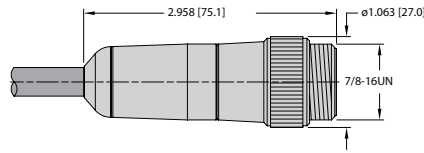
Minifast HD (Heavy Duty) Cordsets (continued)

Dimension Drawings

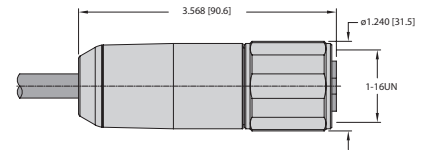
A (A-size female)



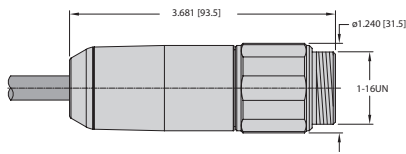
B (A-size Male)



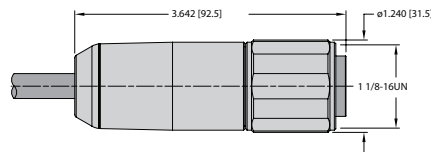
C (B-size female)



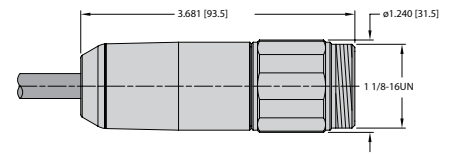
D (B-size Male)



E (C-size female)



F (C-size Male)



Pinouts

1 Female 2 pin	2 Male 2 pin	3 Female 3 pin	4 Male 3 pin	5 Female 4 pin	6 Male 4 pin
7 Female 4 pin	8 Male 4 pin	9 Female 5 pin	10 Male 5 pin	11 Female 6 pin	12 Male 6 pin
13 Female 7 pin	14 Male 7 pin	15 Female 8 pin	16 Male 8 pin	17 Female 9 pin	18 Male 9 pin
19 Female 10 pin	20 Male 10 pin	21 Female 12 pin	22 Male 12 pin	23 Female 19 pin	24 Male 19 pin

We reserve the right to make technical alterations without prior notice.